

ACROSS THE FENCE



Vol. XXXI No. 8

October 2009

<http://www.WFSCstamps.org/>

Newsletter of the Wisconsin Federation of Stamp Clubs

American Philatelic Society Chapter #350, American Topical Association Chapter #107

President's corner

Need Help? Volunteer

By Maurice D. Wozniak, President of WFSC

For boys and girls, the hobby of stamp collecting today is vastly different from what it was when I started collecting in the late 1940s. But then, isn't everything different?



I began to muse on this subject because people often ask me about the status of stamp collecting in general, and I always say it is good. I can

cite statistics to prove it. But it is different, especially for beginners.

Also, traditionally, October is National Stamp Collecting Month, when the United States Postal Service used offer something special aimed at the

youth market. The Ben Franklin Stamp Clubs and the Stampers programs have disappeared. This year, the best we have is the Kelp Forest pane in the popular Nature of America series and the various holiday stamps.

Finally, there are two interesting promotions aimed at youth. In one, the Wisconsin Federation of Stamp Clubs has joined with the children's museum in Appleton to put on a day-long program, Oct. 10, to introduce very young children to the hobby. The other is the Young Philatelic Leaders Fellowship program of the American Philatelic Society. Three young teenagers were selected as the first recipients. Alex Haimann, who is just 23 years old himself and works for the National Postal Museum and Mystic Stamp Co., founded the program. He'll make made appearances in Wisconsin this month (see article below).

Several Federation clubs have youth-oriented outreach programs. Depending on how you gauge success, some are very successful. Perhaps we should have a seminar at Wiscopex 2010 in Oshkosh to share ideas in this area.

It occurred to me that when I started collecting I

had a mentor of sorts (an uncle) who helped me a little. I could go to the post office and buy commemorative stamps as they were issued, and I had a choice of dealers who catered to beginners like me and who advertised introductory offers and approvals.

Nowadays, it's a rare treat to see a real stamp (let alone a commemorative) on a letter in my mailbox from someone who isn't a collector. Sure, in the old days most letters bore a 3c Jefferson, but a commemorative wasn't as rare as today. So kids don't have that daily expectation that they might get a free treasure in the mail.

A half-century ago, stamps connected me with the exotic — the little ads emphasized exquisite pictures of African animals or the Pope. Yup, I know now the countries that issued these stamps were simply pandering to us young, impressionable collectors. Still, the subjects were tantalizing, the dealers gushed over the stamps and I loved them.

Nowadays, the media bombard kids with close-up, high-definition looks at every aspect of our world. Children don't need those tiny stamp pic-

President's Message continued on Page 4

Smithsonian Specialist to Visit Wisconsin

Alex Haimann, a collection specialist and web project developer for the Smithsonian's National Postal Museum, is coming to Wisconsin this month. He will spend three days giving presentations in schools.

Haimann's school visits are planned so that each session relates to the subjects the students are currently studying. He brings along carefully selected stamp materials that relate to the class studies.

Several evening programs are also planned. His speech, "Tales from Journeys in the Stamp World" and a hands-on display of Eclectic Philatelic Material promise to be both entertaining and educational.

The Wisconsin Federation of Stamp Clubs will host a dutch-treat dinner meeting with Haimann as the guest speaker on Monday, Oct. 5, 2009. Dinner will start at 6 p.m. at the Rolling Meadows Restaurant in Fond du Lac. The Milwaukee Philatelic Society will welcome him as their guest for the Tuesday, Oct. 6 meeting. Adults will meet at 7 p.m. in Room G110 on the lower level of Mayfair Mall. A special youth presentation is planned for 6 p.m. the same evening.

All Wisconsin stamp club members and interested public are invited to attend and meet Alex, a young 23-year old philatelist bringing in new ideas and finding innovative ways to get younger generations interested in stamp collecting.

Please check either the Wisconsin Federation of Stamp Clubs website (www.wfscstamps.org) or the Milwaukee Philatelic Society website (www.milwaukeephilatelic.org) for updated information in case of a change in schedule.

Inside this issue:

1...President's Corner

1...Smithsonian Specialist to Visit Wis.

2...Clubs are Trump

3...Newest Warman's Guide – Stamps

3...Old Frames Wanted

3...Hall of Fame Nominations Due

3...WFSC to offer program for youth

3...Who's Who in the Hall of Fame

4...Milcopen '09 Awards announced

5...Exhibiting 101: Introduction

5...*Illustrated Encyclopedia of Stamps & Terms*

6...Cover Exchange Offer

6...Closed album: Art Petri

6...Schutta, Albrecht honored at Milcopen

6...Adding to your collection...free!

Clubs are Trump

By Maurice D. Wozniak, President of WFSC

Gene Clark, president of the **Outagamie Philatelic Society**, Appleton, and editor of *The Valley Philatelist* newsletter, included a helpful and timely feature in his September publication – a listing (clipped from another publication) of Christmas-themed postmarks from Midwestern United States cities.

The brief item included an Internet website, (www.christmaslettertips.com/christmas_postmarks.htm) that has a more extensive list from 2008, along with ZIP Codes. The site also had a comments section with a discussion on the difference between a stamped cachet from some stations and an actual postmark cancellation, as well as the widespread use of spray cancels today.

“Dress up your holiday cards with postmarks from Christmas-themed Midwest cities,” the article used by Clark suggested. “Put your addressed and stamped envelopes in a separate envelope and mail it to the post office of your choice by Dec. 15.”

In past years, someone at the selected post office would apply a pictorial cancel or cachet to your envelopes and send them on. We can't vouch for current practices, so you

Remember...

Please support *ATFP* advertisers.
They keep *your* newsletter healthy!

should enquire with a letter to the postmaster (with a self-addressed envelope or postal card for a reply) before mailing your bundle.

A helpful little item like this can make a big difference in how your club members react to the newsletter – or even the club itself.

* * *

Program ideas

Outagamie Philatelic Society, Appleton, plans to offer members a new feature – a silent auction of unwanted items from their collections at every meeting. Swaps, auctions, trading nights and meals constitute the bulk of the programs for the next 12 months.

The **Milwaukee Philatelic Society** scheduled a 20-minute program titled “Mystery, Intrigue and a Blueprint.” Hmm, intriguing, but a mystery.

A show-and-tell of philatelic items relating to the letter “B” was a program at the **Badger Stamp Club**, Madison. Offerings included bogus stamps, issues from Borneo and Brazil and the U.S. Buckeye butterfly stamp.

* * *

What others are doing

Jim Stearns, bulletin editor for the **Northwoods Philatelic Society**, Iron Mountain, Mich., noted that collectors at the club's June meeting, including visitors, came from “well over 200 miles” away.

Things you might not know if you didn't read your newsletter: A photo in the **NML Stamp Club**, Milwaukee, *Open Album* newsletter indicates that Sunnyside Hatchery

in Beaver Dam is one of few in Wisconsin that sends newly hatched chicks through the mail; and a photo of a mailbox includes the notation that the Milwaukee area is dropping 200 postal boxes.

The *Milwaukee Philatelist*, newsletter of the **Milwaukee Philatelic Society**, won a vermeil award in American Philatelic Society philatelic literature competition.

Badger Stamp Club, Madison, plans to update its 1998 directory of member interests. Entries will be voluntary to address privacy concerns.

Information for “Clubs Are Trump” is gathered from club newsletters. Please send newsletters to Maurice D. Wozniak, 1010 Berlin St., Waupaca WI 54981.

Across the Fence Post Ad Rates (revised 1/06)

Type Size	Commercial Rate	Club Rate
A Full page (7 1/4"x 9 1/2")	\$42.00	\$33.75
B Half page (7 1/4" x 4 3/4")	\$26.25	\$21.00
C Large 1/4 page (4 3/4"x 6")	\$20.50	\$16.50
D Medium 1/4 page (4 3/4" x 3 3/4")	\$14.75	\$11.75
E 1/8 page (2 1/4" x 3 3/4")	\$7.50	\$6.00
F Econo Ad (2 1/4" x 2 3/4")	\$3.75	\$3.00
G Reduced Business Card (2 1/4" x 1 1/4")	\$2.75	\$2.25
H Back page (7 1/4" x 9 1/2")	\$57.75	N/A

Please make checks payable to :W.F.S.C.

Wisconsin Federation of Stamp Clubs officers

PRESIDENT

Maurice D. Wozniak
1010 Berlin St.
Waupaca, WI 54981
715-258-2025
mwoz@live.com

VICE PRESIDENT

Jim Stollenwerk
1020 Hazelwood Court
West Bend WI, 53095
Home: 262-306-0829
Cell: 262-305-1483
JSASTOLLEN@charter.net

SECRETARY

Vacant

TREASURER

Charles H. Green
5199 Bittersweet Lane
Oshkosh WI 54901-9753
(920) 426-1066
bgreen9001@yahoo

VP YOUTH DIVISION

MaryAnn Bowman
P.O. Box 1451
Waukesha, WI 53187

NE REGION VP

Al Marcus (maram@tds.net)
Green Bay Phil. Soc.
Northwoods Phil. Soc. (Iron Mountain)
Outagamie Phil. Soc.
Wisc. Postal Hist. Soc.

EAST CENT. REGION VP

Vern Witt
Fond du Lac Stamp Club
Kettle Moraine Coin & Stamp Club
Manitowoc Phil. Soc.
Oshkosh Phil. Soc.
Sheboygan Stamp Club

SW REGION VP

Valerie Cook
Badger Stamp Club
Baraboo Stamp Club
Janesville Stamp Club
Monroe Stamp & Postcard Club
Rockford Stamp Club

SOUTH CENTRAL REGION VP

Art Gaffney
stehlee@aol.com
Waukesha County Phil. Soc.

SE REGION VP

Art Schmitz
pescador@milwpc.com
Am. Top. Assn. (Chap. 5)
Belle City Stamp Club
Kenosha Stamp & Cover Club
North Shore Phil. Soc. (Milw.)
Northwestern Mutual Stamp Club
Polish American Stamp Club
Wauwatosa Phil. Soc.

Art Petri

American Air Mail Soc. (Billy Mitchell Chapter)
Germany Phil. Soc.
(Chap. 18)
Italian American Stamp Club
Milwaukee Phil Soc.

CENTRAL REGION VP

Mike Lenard
mjlenard@aol.com
Central Wisc. Stamp Club
Chippewa Valley Stamp Club
Northwoods Stamp & Coin Club (Rhineland)
Wisconsin Valley Phil. Soc.

Across the Fence Post is the official publication of the Wisconsin Federation of Stamp Clubs, Inc., a 501c3 non-profit organization. WFSC also is a life member of the APS (since 1953). For more information about WFSC, please contact the Central Office.

AFTP is published monthly September through April, and every other month May through August (10 issues per year). News of Wisconsin collectors, club news and gratis original philatelic features are welcomed. The editor accepts submissions in any format, but prefers email if possible. Editor reserves the right to make editorial changes to submitted copy.

Material appearing in AFTP not carrying an individual copyright notice may be reproduced only by not-for-profit organizations, provided the author(s) and AFTP receive credit or attribution. All materials carrying an individual copyright notice are the sole property of the author(s).

Unless explicitly stated by an officer in conjunction with official WFSC business, opinions expressed by the editor or individual authors are not necessarily endorsed by the WFSC.

Submission deadlines for editorial and advertising materials are for the 1st of the month preceding month of publication (i.e. Jan. 1 for Feb. issue).

All show calendar information, along with all other editorial matter and listings, should be sent to: Wayne L. Youngblood, Editor AFTP, P.O. Box 111, Scandinavia WI 54977-0111. (youngblood@tds.net) phone: 715-467-4416.

Advertising material and payment should be sent to Dave Carney, Advertising Manager, AFTP, P.O. Box 55, Kimberly, WI 54136-0055. (dcarney@new.rr.com) phone: 920-687-9077. For a complete list of advertising rates and policies (display, classified and listings), request a copy from the advertising manager.

Newest *Warman's Field Guide* aimed at beginning collectors

From F+W Publications

A new book by Maurice D. Wozniak is a handy, informative introduction to the fascinating hobby of collecting United States postage stamps.

Warman's U.S. Stamps Field Guide (\$14.99, F+W Publications) is a small-format (4 1/4 x 5 1/4 inches) paperback book with amusing and amazing anecdotes and interesting insights to the world's oldest collecting hobby as well as a quick reference to stamps issued from 1847 through 2008.

The book, which is the latest in the publisher's series of "field guides" to collectibles, is a perfect introduction to stamp collecting. Thoughtful summaries of why people collect stamps, how and where to find stamps, factors in their retail cost, how to judge their quality and how to handle them to prevent damage will help beginners.

Readers will enjoy other brief, interesting essays, such as how the first official airmail flight imitated the error on the first airmail stamp and why the postal service deliberately

printed a mistake.

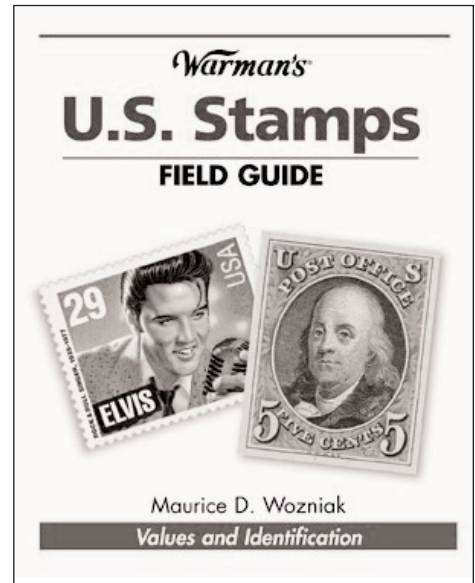
Other narratives describe significant events of various periods in U.S. stamp production.

It is not strictly a catalog, although collectors will find more than 4,200 listings for U.S. postage stamps, including airmail, along with more than 900 color photos. Each listing includes pricing in used and unused condition. The clear, full-color stamp photos in this book will help readers to accurately identify stamps, while they provide a clear view of the evolution of the U.S. Postal Service and advancement in printing technology.

Easy-to-follow, interesting to read and informative to have, this stamp book is small in size, but big in presence.

The author, Maurice D. Wozniak, is president of the Wisconsin Federation of Stamp Clubs, a member of the American Philatelic Society and the Central Wisconsin Stamp Club and a freelance writer specializing in the subject of stamp collecting.

Earlier in his career he served as the editor of



Stamp Collector and *The Stamp Wholesaler* publications, and Minkus catalogs for stamp collectors.

Old frames wanted!

Wanted: your old wooden exhibit frames, approximately 24 by 30 inches in size (holding four to six standard-sized pages) that sit on table tops. Will take them off your hands – please do not destroy. These frames are wanted for use with youth and other beginner collecting programs.

Please contact MaryAnn Bowman, Box 1451, Waukesha, WI 53187, to make arrangements for pickup or delivery.

Wisconsin Philatelic Hall of Fame nominations are due

Nominations are now being accepted for the 2010 Wisconsin Philatelic Hall of Fame. The deadline is Dec. 31, 2009. Qualifications required of nominees are: (1) Contributions of purely local club nature shall not be the sole reason for selection to the Hall of Fame; and (2) A deceased philatelist may not be nominated or considered for selection until three years after his/her death.

Please send your nomination(s), together with a statement identifying the nominee, a short philatelic biography, and the reasons why that person should be selected for the Wisconsin Philatelic Hall of Fame to: Chairman Wisconsin Philatelic Hall of Fame Committee Verna Shackleton, 425 N. Linwood Ave., #110, Appleton, WI 54914. Questions may be answered by e-mail: corosec@sbcglobal.net.

Only WFSC member clubs may submit nominations, and each nomination must be seconded by two other member clubs. The nominating club is responsible for making arrangements with the seconding clubs to provide those seconds. The nomination and seconds should be sent to the Chairman of the Hall of Fame Committee in one mailing.

WFSC to offer program for youth at museum

By Maurice D. Wozniak

Volunteers are needed for a day-long stamp collecting promotion planned by the Wisconsin Federation of Stamp Clubs at the Fox Cities Children's Museum, 100 W. College Ave., Appleton, Oct. 10.

Various activities will be offered to interest children and their parents in stamp collecting, and adults will help guide them.

I am also looking at having a group on the first floor close to the welcome center handing out information, goodie bags and other things to those who attend.

Members of stamp collecting clubs in Green Bay, Appleton, Oshkosh and Fond du Lac are especially encouraged to take part and promote their clubs and any additional youth activities. Collectors from other clubs also will be needed. Please contact Maurice Wozniak or MaryAnn Bowman to volunteer. **It's not too late!**

Tentative plans call for activity stations in a glass-walled classroom often used for special displays. The museum will provide signs inside and outside the building, as well as public announcements throughout the day and newspaper publicity.

On Saturdays the museum is a popular destination for families, and attendance at this event is expected to be good. The museum organizer envisions that visitors will be able to "stroll through and visit with the various clubs and their tables. I want people to take their time, ask questions, learn and be excited about collecting stamps!"

**Bring
a friend
to
your next
stamp
club
meeting
or activity.**

**Your
friend
and club
will
thank
you!**

WHO'S WHO IN THE HALL OF FAME

The Wisconsin Philatelic Hall of Fame was established to recognize prominent Wisconsin philatelists for contributions to the hobby in the state of Wisconsin and beyond.

This series of short columns will familiarize *Across the Fence Post* readers with some of the individuals who have been inducted into the Hall of Fame since 1976, as well as some of the interesting details about them.

Which individual most closely matches the following statements? The correct answer appears elsewhere in this issue of *ATFP*:

This month's HOF member collects postmarks and was president of the Post Mark Collectors Club from 1986-89. He also served terms as treasurer for the group and is a former WFSC president and treasurer. He says that like so many, he started collecting stamps but has now found postal history and Wisconsin post office photos "so much more fun."

- (a) Henry J. Schmidt
- (b) Dan Undersander
- (c) Ray Vedder
- (d) Paul T. Schroeder

Milcopex '09 exhibits and awards announced

Milcopex Grand Award

Burma: The First Two Issues — **Michael Ley**

Also: APS Medal of Excellence, 1940-1980; Gold

Milcopex Reserve Grand Award

Lincoln, Slavery and the Civil War — **Eliot A. Landau**

Also: APS Medal of Excellence, Pre 1900; U.S. Philatelic Classics Society Medal; William J. Ulhein Award for Best americana; Gold

Milcopex Best Single Frame Exhibit

Victoria: The English Mail TPOs, 1887-1917 — **George W. Bowman**

Additional Contender For Grand Award

The Hidalgo Medallion Issues of Mexico (1884-1885-1892) & the First Officials — **Omar J. Rodriguez**

Also: Collector's Club of Chicago Exhibitor's Award

Court of Honor Exhibits

The 1909 Lincoln Commemorative Issues: Early Uses & FDCs — **Eliot A. Landau**

The U.S. Issues of 1861-1868 — **Richard E. Drews**

Open Competition

Gold

Wolf — **Fred Ziemann**

Also: ATA First

A Visitor's Guide to Bloemfontein; A Guide to the Capital ca 1910 — **Timothy Bartsche**

Valiente SCADTA Issues — **Santiago Cruz**

Also: American Air Mail Society Award

Postal History of Bosnia-Herzegovina 1842-1918 — **Alfred R. Kugel**

Also: Postal History Society Medal; Military Postal History Award

The Franklin Delano Roosevelt Memorial Series of 1945-46 and its First Day Covers — **Eliot A. Landau**

Christmas Dinner at the Portland Hotel: December 25, 1914 — **Elizabeth Hisey**

Also: Best Theme: "Thanks for the Memories"

U.S. Vended Postal Insurance (1965-85), A Failed Experiment — **Alan Moll**

Also: APS Medal of Excellence, 1940-1980; USSS "Statue of Freedom Award

Vermeil

Survivors, Crashed and Salvaged Mail in, from and to Columbia — **Alfredo Frohlich**

Also: Auxiliary Markings Club Award

Latvia 1918-1940: Stamps of the Second Great Awakening — **Larry R. Huebner**

The Liberation Period in Hungary During 1938-1944 — **Alfred R. Kugel**

The History of the Louisiana Purchase (1492-1804) — **Joseph F. Frasch**

Also: ATA Second

Postal Markings of Rockford, IL 1837-1937 — **Timothy G. Wait**

Also: American Philatelic Congress Award

Horsing Around — **Robert Henak**

Also: ATA Third; AAPE Creativity Award

Silver Bronze

Apollo 13, as predicted by Jules Verne — **Jack Green**

Bronze

Philippine Islands - Woman and Carabao — **Daniel F. Ring**

A Tribute to Benjamin Franklin — **Carol Schutta**

American Possessions - Inter Possessions Mail — **Daniel F. Ring**

Certificate

Commemorative Stamps and Postage Stamps with Benjamin Franklin — **Carol Schutta**

Single Frame Awards

Gold

Victoria: The English Mail TPOs, 1887-1917 — **George W. Bowman**

Polish Forces in Exile in the Soviet Union During WWII — **Alfred R. Kugel**

Also: Research Medal

"Hubba-Hubba" Handstamps: A Korean War Semi-Official Air Mail Postal Marking — **John M. Hotchner**

Wheat Ridge - The Other Christmas Seal — **Alan Moll**

Vermeil

The Winnebago Portage — **Neal West**

"Old Four Legs" The Living Fossil — **Roland Essig**

Also: ATA single Frame Award; AAPE Award of Honor

Silver

Manuscript RFD Postmarks of Wisconsin — **Neal West**

Bronze

Let Me Mount the Ways — **Ellen Henak**

Also: Women Exhibitors Sterling Achievement Award

Non Competitive Exhibits

Art Matches Reality! — **John M. Hotchner**

A Cover for All Programs — **Robert J. Mather**

MPS Circus Covers — **Robert Henak**

It's a Miracle We've Survived as a Nation! — **John M. Hotchner**

Youth Awards

Vermeil

Building a Nation . . . one state at a time — **Adam S. Mangold**

Also: NAYSEC Youth Grand Award; ATA Youth Award; AAPE Award of Honor;

Silver Bronze

Man's Best Friend: Recognized Breeds of the American Kennel Club — **Jenna Smith**

The Olympics: Let the Games Begin — **Sherri Biendarra**

President's Message, continued from Page 1

tures to get their adventure fixes.

The places where I would buy stamps on my rare visits to the big city of Milwaukee in the 1950s no longer sell stamps. Even the Gimbels Dept. Store, one of the most fascinating sources, doesn't exist. Nor does the huge store across the street, which had a walk-in safe to protect its treasures.

Nowadays, kids have a more challenging task to actually see and feel real stamps. They can find dealers at a stamp show or bourse who will sell low-market-value stamps to them.

If they are guided by an adult who is an enthusiastic collector, the challenge will be easier to overcome. And when the youthful collector decides he or she likes electronic games better than stamps – or falls in love with someone else, the helpful adult should try not to feel rejected or dejected.

Once introduced to the joys of stamp collecting, the youngster might come back to them later. That's what happened to many of us, and when we started again it wasn't the same hobby that we remembered. It was different, but still fun.

Exhibiting 101: Introduction

Robert R. Henak

This is the first of what hopefully will be a series of articles on the basics of philatelic exhibiting. I plan to cover the what, why, where, and perhaps most importantly, the hows of transforming your collection or accumulation of stamps, postal history, postcards and other philatelic material into a display that will not only share your love and knowledge of these particular bits of paper, but perhaps win you some awards as well.

Over the past number of years, several of us involved in organized philately in Wisconsin have noted with dismay the decrease in both the number of local stamp shows featuring exhibits and the number of exhibitors and exhibits displayed at these shows. We are at the point now that – in the past year – only Wiscopex/Rockpex and Milcopex, Wisconsin's national-level stamp show, had any competitive exhibits.

This series of articles and additional efforts by Milcopex, the Wisconsin Federation of

Stamp Clubs and others, represent an attempt to change this. Milcopex and the WFSC, for instance, have initiated a program allowing four-page exhibits, along with mentoring and support from experienced exhibitors, to help novice exhibitors learn the ropes. The organizers of Triplex plan to open the show to exhibits next June.

You may wonder what credentials I have to write on this topic. While I still have a lot to learn myself, I have exhibited at the local and national level for more than 12 years. I have been an accredited WFSC philatelic judge for eight years or so, and have been the Milcopex Exhibits Chair since 2001. I have shown nine different exhibits competitively over the years, with five of them currently active and two new exhibits under development. With those exhibits, I have earned or been awarded (not always the same thing) every award from a certificate to best in show at the local level, and every medal from bronze to gold at the national level.

What is a Philatelic Exhibit?

A philatelic or stamp exhibit is more than just an assortment of favorite pages pulled from an album or stock book. Rather, an exhibit should be a coherent showing of stamps, covers and other philatelic materials organized with some writeup to tell a story. The story may cover the development and usages of a particular stamp, the postal history of a town, county, or stamp, or the life of some person or animal.

The possible subjects for a philatelic exhibit are virtually endless. Like any good story, however, it should have a logical flow, with a beginning, a middle that develops the story and an ending that ties the story together.

* * *

In future articles, I will discuss why a collector may want to become an exhibitor, the various types of exhibits and exhibitions, and the nitty-gritty of putting together an exhibit.

Illustrated Encyclopedia of Stamps & Terms®

Aerogramme, or Aerogram.

This is the official Universal Postal Union name for lightweight airmail lettersheets created specifically for international use. Such lettersheets are usually made from very thin paper stock to minimize bulk, and enclosures of any kind are not permitted. Historically, aerogrammes have frequently enjoyed reduced postal rates. Aerogrammes are known to have been used as early as 1933 (in Iran). Their widespread use came after World War II, although their use is all but obsolete today. Aerogrammes may be pre-stamped or have adhesive stamps added.

Airmail. Simply put, any and all postal matter carried by air is airmail, although not all of it is acknowledged as such.

Excluding pigeons, the use of airmail began with the 1859 *Jupiter* balloon flight, which marked the first government-sponsored airmail, and continued with the 1870 siege of Paris (France) balloon mail. The first actual airmail carried by powered aircraft, however, wasn't until about 1908. Regular airmail flights in the United States did not begin until 1918.

For modern collecting purposes, use of the term "airmail" narrows somewhat to designated airmail,



An aerogramme from Denmark.

since most modern mail travels by air routinely, with no special designation.

Bulk Mail. This is the type, or class of mail commonly referred to by many as "junk mail." Bulk mail is sorted, bundled and processed at various levels by the mailer in exchange for reduced postage rates. The classification encompasses numerous forms, including several mail classes, different levels of presorting and non-profit status. Although all bulk mailers receive discounted postage rates, they earn those discounts. Many of these different rates are represented by fractional-denomination postage stamps. Many collectors save bulk mail stamps and study

the postal history connected with them. Some covers showing specific bulk rates are rare.

False Franking. This is a practice connected with bulk mailing, whereby a stamp represents only a portion of the postage paid per piece. For example, a bulk mailing may consist of several thousand pieces of mail for which the cost is 21.1 cents each. A 15c stamp may be affixed to represent the rate, with the remaining 6.1 paid by the mailer at the time of posting.

Fractional-Denomination stamps. This term refers to stamps issued in decimal or fractional denominations, such as 3.4c or 1/2c, for use by major mass mailers to take advantage of the various

automation sorting discounts available to large-volume postal customers and bulk mailers. Although earlier stamps can be found as fractional-denomination types, virtually all these stamps of the past 30 years have been issued in decimal-denominated coil format only, since only coil stamps can be used in the high-speed stamp-affixing equipment that mass mailers use.

Teeth. These are the projecting parts of perforations along the edge of a stamp, formed by what was the bridge of paper between unsevered stamps. Each individual tooth gives a stamp its own personality and can be used much like a fingerprint for identification of a specific stamp or even perforation type.

Underfranked. This term refers to a cover that has an insufficient amount of postage affixed to it to prepay the service requested or implied. When they are detected, underfranked covers are assessed postage due and marked as such. They may either be held for postage or forwarded, with the recipient responsible for the additional amount.

Unpaid-Letter Stamps. This is simply the original name used to describe what we now refer to as postage due issues.

— © 2009, *Youngblood Ink*

Cover Exchange Offer

The Wisconsin Federation of Stamp Clubs will once again sponsor a nationwide cover exchange program. Any stamp club, philatelic organization or individual may participate.

The program is being conducted in conjunction with National Stamp Collecting Month in October. The exchange offer will expire Oct. 31, with returns being made to participants by mid-November.

Participants must submit 10 all-alike covers and a large business-sized envelope addressed and franked with 61c postage. (Larger envelopes may require additional postage and must be paid by the submitter.) In exchange, eight different covers will be sent back. The extra covers will be used with the Federation's youth program.

Only unaddressed cacheted covers on No. 6 envelopes bearing either pictorial or first-day cancels from the United States will be accepted. There is a limit of 20 covers. Clubs with leftover show, commemorative and first-day covers can reduce their inventory by exchanging them for different covers that can be used as club auction items, door prizes or gifts.

The cover exchange program coordinator reserves the right to return covers considered unsatisfactory for exchange.

To submit covers, write to the Wisconsin Federation of Stamp Clubs, P.O. Box 1451, Waukesha, WI 53187.

Schutta, Albrecht honored at Milcopex

Wisconsin collectors Carol Schutta and Kurt Albrecht both were honored with different awards marking their spirit of volunteerism during Milcopex '09, held at Mount Mary College in Wauwatosa, Sept. 25-27, 2009.

Schutta, a Milwaukee collector, was named this year's Greater Milwaukee Distinguished Philatelist, an award given because she has "visibly demonstrated repeatedly her interest in the hobby of stamp collecting and in developing interest and enjoyment of the hobby for others." She is currently secretary of the Milwaukee Philatelic society (and editor of its newsletter), a board member for Milcopex, Stampfeat and Tripex, and a member of MPS, ATA Chapter 5, North Shore Philatelic Society, Wauwatosa Philatelic Society, American Philatelic society and others.

Albrecht, of Waukesha, received this year's (Nick) Carter Volunteer Recognition Award for his local promotion and service. He currently serves as treasurer for the Milwaukee Philatelic Society and is a past Southeast Region Vice President for the WFSC. He has handled the jury, awards and has exhibited for many Milcopex shows. He also works to make the hobby attractive in many ways, including sharing his non-competitive five-frame exhibit, *May the Force Be With You*. Albrecht was a volunteer for APS StampShow 1997 in Milwaukee, and APS StampShow 2001 in Chicago. He also was recognized by Milwaukee area clubs as the Greater Milwaukee Distinguished Philatelist in 2001 for his many years of service. Full details of this award were published in the September *ATFP*.



Carol Schutta



Kurt Albrecht

Closed Album: Art Petri

Although most everyone in the Wisconsin Federation of Stamp Clubs knew Art Petri as a collector, many others in the state knew him only as "Jolly the Clown," named for Milwaukee Braves pitcher Dave Jolly, a friend who died in 1963. Petri passed away Aug. 26, 2009, at the age of 82.

Long the clown coordinator for Milwaukee's Great Circus Parade, Petri was one of three clowns honored at the parade this year, and was allowed to sit in the VIP stands. He came in costume. He also was involved in bringing the World Clown Association to Milwaukee for its 1989 convention, taught hundreds the business of clowning and helped found four clown "alleys," or clubs.

Petri became a clown during the 1950s, after losing most of the vision in his left eye, having surgery on his right and struggling with a lung condition that required surgery. Among other things, his doctor encouraged Petri to blow up balloons for respiratory therapy. He became known for his balloon work, creating a repertoire of nearly 200 animals and shapes. He self-published a book, *Balloonology*, for a course he taught at Cardinal Stritch University and the University of Wisconsin-Milwaukee.

Petri went semi-pro in 1963 with Jolly the Clown Enterprises, later AA Entertainment. He played big venues – Summerfest and the Wisconsin State Fair – plus plenty of charity outings. He was the only American clown invited to perform at the 1967 World's Fair in Montreal.

Petri was a longtime volunteer and board member at the Badger Association of the Blind and Visually Impaired.

Petri was the first-ever Ronald McDonald in Milwaukee, his son said. Jolly the Clown worked his last event July 4 in Brookfield. Survivors include Patricia, his wife of 60 years, daughters Linn Petri and Debi Tritschler; a son, Thomas; sister Laural Gunderson; brother Richard; and grandchildren.



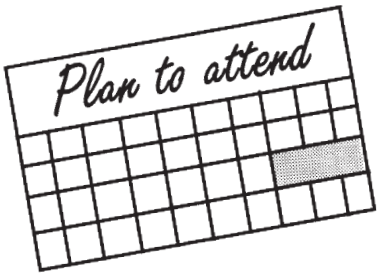
Adding to your collection...free!

Art Schmitz

I've said it before, but here's an incredible example of its worth. The best tool a stamp collector has is his or her mouth! A woman from church called me today to ask me if I'd be interested in getting some stamps.

Another woman she knows has a six-album collection of a European country. My friend at church told her about me, and this coming Sunday, I'll be the owner of that six album collection — gratis, for free! The European woman wanted to give it to a stamp collector who'd appreciate it. I collect worldwide general, so there's no problem at all there for me, except that until Sunday I'll be burning with curiosity to know if some of the special items I know that particular country has issued, especially in the 1930s and '40s are in that collection. And, this isn't the first time this has happened. As a teenager, my girl friend gave me her collection with some fairly rare New Zealand material. During World War II, an acquaintance in Ulster (North Ireland) gave me a mint booklet pane of Ireland 66b, now cataloging \$250. During the Korean conflict, a friend stationed in the Ryukyu Islands gave me Ryukyu C1-C3 mint, now cataloging \$400+.

The secret is not just telling everyone, "Hey, I'm a stamp collector." Share some of the really interesting stories about postage stamps you already have, not like one character I met recently who's not at all interested in the story behind the stamp, the personality, historical or geographic elements involved. For him, mere possession is enough.



Show Calendar and Registry

List your show, bourse, auction or other event here!
 Calendar listings are free for one WFSC member-club event per year. Classified advertising rates apply for all non-members and other events appearing in this section.

2009 WFSC show schedule*

*Some dates and details may be subject to change, and there will likely be additional listings.

Oct. 3, 2009

**Monroe Stamp and Postcard Show
 Monroe Stamp and Postcard Club**
 Monroe Public Library, 925 16th Ave.,
 10 a.m. to 2:30 p.m.
Contact: Earl Button, 1214 Second St.,
 Monroe, WI 53566
 (608) 328-2827, ebutton@tds.net

Oct. 24-25, 2009

**Tosapex '09
 West Allis - Wauwatosa Philatelic Society**
 St. Aloysius Gonzaga Hall
 1435 So. 92nd St.,
 Sat. 10 a.m. to 5 p.m., Sun. 10-4
Contact: John Fagan (262) 251-0617,
 faganfalls@aol.com

Nov. 21, 2009

**Oshkosh - Oshkosh Stamp Bourse
 Oshkosh Philatelic Society**
 Elk's Club, 175 Fernau St.
 10 a.m. to 4 p.m.
Contact: Al Marcus -920-725-0798,
 allan.marym@hotmail.com

**Other major
 non-WFSC shows
 near Wisconsin
 (below):**

Oct. 10, 2009

**Wausau - WaUSApeX '09
 Wisconsin Valley Philatelic Society**
 Wausau Labor Temple
 Stewart and 3rd Aves.
 10 a.m. to 4 p.m.
Contact: WVPS, P.O. Box 71,
 Wausau, WI 54402-0071
 ziemfd@dwave.net

Nov. 7, 2009

**Plover - Cenwispex '09 (fall)
 Central Wisconsin Stamp Club**
 Plover Village Hall, 2400 Post Rd.
 10 a.m. to 4 p.m.
Contact: J.D. Manville, P.O. Box 845,
 Stevens Point, WI 54481
 (715) 498-1111

April 10, 2010

**Oshkosh
 Wiscopex '10
 (Annual Convention and Exhibition of the
 Wisconsin Federation of Stamp Clubs)**
 Hosted by the Oshkosh Philatelic Society
 Christian Schools, 3450 Vinland Rd.,
 10 a.m. to 4 p.m.
Contact: Al Marcus (920) 725-0798,
 allan.marym@hotmail.com

Nov. 20-22, 2009

**Arlington Heights, IL
 Chicagopex '09
 Chicago Philatelic Society,**
 Sheraton Chicago Northwest
 3400 West Euclid Av
 Arlington Heights, IL 60005
 10:00am-6:00pm Friday and Saturday,
 10:00am-4:00pm Sunday
Contact: Kevin Doyle
 5815 Lenox Rd
 Lisle, IL 60532-3138
 doyle-stamps@att.net

Remember...

Please support **ATFP** advertisers.
 They keep *your* newsletter healthy!

Answer to Who's Who quiz on Page 3:
 Paul T. Schroeder

U.S. Mystery Boxes!!



I'm cleaning out the stamp room again!
 Guaranteed to be worth far more than you pay. Just let me know what you collect...

While they last:

\$25, \$50, \$100, \$250, more, postpaid

Wayne Youngblood
 P.O. Box 111

Scandinavia WI 54977-0111

youngblood@tds.net

Always buying, selling, accepting consignments for Regency-Superior Auctions. 10.09

Attention WFSC members:

As a special offer to collectors who read *ATFP* (and as a way to help the organization), I will send the WFSC 15% of all sales generated by this ad. **Please specify at the time of your purchase that this is the "WFSC Special."**

**Dave's Stamps
 (Dave Carney)**

P.O. Box 55

Kimberly WI 54136

dcarney1@new.rr.com

(920) 687-9077

APS Lifetime member

01.10



METROPOLITAN STAMP COMPANY

Of Chicago, Inc.

P.O. Box 657

Park Ridge, IL 60068-0657

Collections Bought & Sold
 U.S. • Worldwide • U.S. & Foreign Ducks

Ted Castro
 (815) 439-0142

Paul Enderle
 (847) 698-3351

FAX (815) 439-0143

FAX (847) 698-3381

02.10

E-Mail: metrostamp@aol.com
 www.metropolitanstamps.com



Lake Edge Stamp Service (L.E.S.S.)

Robert T. Voss
 P.O. Box 35
 McFarland, WI 53558

lestamps@charter.net
 (608) 838-1033

07.10

Lots of Worldwide Stamps
 Bought and Sold



Please...

Use stamps on
 philatelic mail
 whenever possible.
 We all like to
 receive stamps!

Eastern Auctions Ltd.

Canada's most trusted auction house

In addition to our award winning Public Auction catalogues, we offer interested collectors several other stamp buying opportunities on a regular basis.

We would like to introduce you to our *Eastern Mail Sales*—a listing of several thousand accurately described lots. These lots cover the whole range of philatelic collecting interests, from single stamps to complete collections with everything in between.

Our mail sales are published about seven times a year. Take the time to peruse one and we are confident you will find many desirable items worthy of your collection.

Please contact us for your complimentary copy of our next sale.

Eastern Auctions Ltd., Box 250, Bathurst NB E2A 3Z2

Attention Stamp Club Presidents:

Would your club benefit from additional membership?

Would your club be able to offer more engaging programmes if your Treasurer's Report was further in the Black?

Eastern Auctions is starting a new incentive program to help Local Stamp Clubs increase membership as well as improve their balance sheets.

Please contact Bill.Burden@easternauctions.com for further information.