

# ACROSS THE FENCE



Vol. XXXIII No. 3

March 2011

www.WFSCstamps.org

## Newsletter of the Wisconsin Federation of Stamp Clubs

American Philatelic Society Chapter #350, American Topical Association Chapter #107

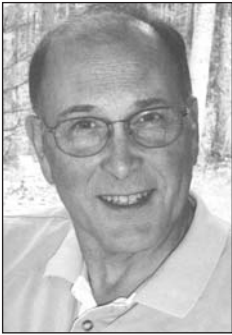
### President's corner

#### Wiscopex Excitement

By Maurice D. Wozniak, President of WFSC

I'm excited about Wiscopex 2011 for two reasons: First, it's in Stevens Point for the first time in many years. It is the second year in a row that a small club has stepped forward to host the annual philatelic show and convention of the Wisconsin Federation of Stamp Clubs. In 2010 the show was held in Oshkosh.

This represents a departure from recent years, when three clubs have rotated in hosting Wiscopex. Traditionally, the venue for the show moves around the state, which exposes collectors in



those areas to new appreciation for the breadth of the hobby and offers the bourse dealers a somewhat new field of potential customers. In that regard it is similar to the moving show schedule held by the American Philatelic Society for its annual StampShow and AmeriStamp Expo shows – but on a smaller scale, of course.

A second (and related) reason for my enthusiasm is that the Central Wisconsin Stamp Club, the club to which I belong, is the host. The club has a long tradition of holding annual local shows, but the experienced talent pool for holding a show of this scale is not very deep.

The fact that this club could organize the myriad details required for a Wiscopex show is proof that just about any club can do it; the main ingredients are enthusiasm and a willingness to help.

Wiscopex 2011, coming 80 years after the first philatelic show held by the WFSC, will be held Saturday and Sunday, April 2-3, at the new Holiday Inn on the east side of Stevens Point.

All stamp collectors are invited to this annual springtime reinvigoration of our hobby.

A central part of the show, the annual meeting of the Federation, will take place from 1-3 p.m. Saturday. Everyone is welcome to attend the meeting, but member clubs are expected to send designated delegates to take part and report back to the clubs. Federation officers and committee heads will make brief reports on their accomplishments in 2010 and look ahead to plans for 2011. Those at the meeting have an opportunity to comment and make suggestions.

Also at the meeting, the name of one Wisconsin stamp collector will be offered for admission to the WFSC Philatelic Hall of Fame. Until then, the nominee, whose name has been put forth by one club and seconded by at least two others, is a closely guarded secret, even to the WFSC board. (Incidentally, now is a good time to start the nomination process through your club for the 2012 inductee, if you know of someone worthy of this honor.)

The presentation of the certificate traditionally takes place at the awards dinner Saturday evening. Exhibit awards also will be given, and Wayne Youngblood, editor of the *Across the Fence Post* newsletter of the WFSC and an expert on United States stamp production methods, will speak on errors, freaks and oddities on modern U.S. stamps.

Please come. Shop at the bourse. View the exhibits. Stop at the WFSC table and join us at the annual meeting. Show your support for your fellow stamp collectors who have planned this show for your benefit. I hope you'll have a good time and help advance our hobby.

Full show details appear on Page 3.

### Talks at Wiscopex '11 Planned

A series of free talks have been scheduled during Wiscopex '11, April 2-3 in Stevens Point, on topics of interest to Wisconsin stamp collectors. The programs will last no more than an hour each, and will be held at the Wiscopex show hotel, the Holiday Inn.

Robert Mather will kick off the series with a session on the National Topical Stamp Show, which will be held in Milwaukee, June 24-26. It is the annual show of the American Topical Association, and Mather is a member of its board of directors. His talk will be at 11 a.m. Saturday, one hour after the show opens.

Jay Bigalke, a Wisconsin native and currently associate editor at *Linn's Stamp News* in Sidney, Ohio, will reveal "The Life of a *Linn's* Staffer" at noon on Saturday.

The annual meeting of our sponsoring organization, the Wisconsin Federation of Stamp Clubs, will begin at 1 p.m. Saturday. Each member club is expected to send one official delegate to attend the meeting and report back to the club. The meeting is expected to end about 3 p.m.

At the awards dinner Saturday evening, Wisconsin author and editor Wayne Youngblood, who currently edits *Topical Time*, the *Airpost Journal*, *The Posthorn* and *Across the Fence Post*, as well as writing popular columns for the *American Philatelist* and other publications, will speak on modern errors on United States stamps. Dinner tickets are \$30 and will be available at the show Saturday morning.

Sunday activities will begin at 9 a.m., an hour before the opening of the show, with a meeting of the Wisconsin Postal History Society.

Gregg Greenwald, president of Central Wisconsin Stamp Club, the host club for Wiscopex '11, will speak at 10 a.m. on "Collecting U.S. Revenues."

Darren Mueller will talk on Wisconsin Postal History at 11 a.m. Sunday.

Ken Grant will discuss "Wisconsin Cinderellas" at noon Sunday.

Other sessions also may be added to the schedule prior to the show.

### Inside this issue:

- 1...President's Corner
- 1...Talks at Wiscopex 2011 planned
- 2...Clubs are Trump
- 2...Call for Exhibits: Danepex 2011
- 3...Wiscopex '11 Set for Stevens Point, April 2-3
- 3...Last Call for Exhibits: Wiscopex
- 4...Exhibiting 101:  
Thematic Exhibiting Part II
- 5...Show Calendar and Registry

## Clubs are Trump

By Maurice D. Wozniak, President of WFSC

Members of clubs don't mind paying their annual dues if they think they're getting value for their payments. If a club is providing value, its treasurer shouldn't be hesitant to ask members to pay their fair share – and tick off the reasons for their dues.

Here's how the **American Topical Association Chapter 5**, Wauwatosa, put it in a recent newsletter:

*"At \$5 per year [the dues are] one of the best philatelic bargains around. Members have enjoyed a free holiday dinner in December with this membership. You also get a cacheted envelope (12 per year) with each club meeting notice. [Note: That's \$5.28 in postage.] Club mailings include interesting philatelic features and articles. Several door prizes are available at each meeting. Meetings offer interesting programs, and member participation in the Show and Tell sessions is outstanding. The social*

*aspect of the club cannot be underestimated, and good fellowship and camaraderie at the meetings is great. No other club in the area offers you this much."*

Officers of other clubs can profit from this recital. Use the list as something to copy in planning what your own club might strive to offer.

And when you have to ask your members to part with their hard-earned money, you won't have to be timid about it.

\* \* \*

### Program ideas

Part of a program in January at the **American Topical Association Chapter 5**, Wauwatosa, was a "Can't Show but Tell" discussion on philatelic items members could kick themselves for not having obtained in 2010. What did you do to try to obtain it? Why were you not successful? What would you do differently if you had another chance? (Members also talked about what they did get last year.

**Milwaukee Philatelic Society** members were asked to bring in one item from their collection that has a story behind it.

\* \* \*

### What others are doing

**American Topical Association Chapter 5**, Wauwatosa, is underwriting the cost of box lunches for participants in a full-day tour to central Wisconsin attractions during the National Topical Stamp Show in Milwaukee in June.

The chapter is planning an event this summer with the Milwaukee Humane Society in conjunction with the issue of a United States stamp for Owey, the fabled postal dog.

The **Milwaukee Philatelic Society** is collecting used printer ink cartridges to get credit towards the purchase of additional cartridges to print its newsletters and other handouts and communications.

\* \* \*

*Information for Clubs Are Trump is gathered from club newsletters. Please send them to Maurice D. Wozniak, 1010 Berlin St., Waupaca WI 54981.*

### Call for Exhibits: Danepex 2011, April 1 Deadline

The annual Danepex exhibiting competition is open to all Wisconsin Federation of Stamp Clubs members. Exhibit classes offered are: (1) Single-frame Statewide Championship, (2) Open Multi-frame and (3) Youth. Non-competitive exhibits will be accepted pending space available. The show theme is "Commemorating the American Civil War," and related exhibits are very much encouraged. WFSC certified judges will determine the exhibit awards. Best of Show in the Multi-frame class will be eligible for the Champion of Champions competition at Wiscopex '12.

Wiscopex 2011 will be held Sunday, April 17, at the Crowne Plaza Hotel in Madison, Wis.

To request an exhibit entry form and more details of the competition, contact Exhibits Chairman Karen Weigt at (608) 836-1509, or by email, [kweigt@tds.net](mailto:kweigt@tds.net).

If you've already prepared an exhibit for Wiscopex '11, it's ready to go for Danepex, just two weeks later.

**We're all  
collectors...  
Please use stamps  
whenever possible  
on your mail!**

## Wisconsin Federation of Stamp Clubs officers

### PRESIDENT

**Maurice D. Wozniak**  
1010 Berlin St.  
Waupaca WI 54981  
715-258-2025  
[mwoz@live.com](mailto:mwoz@live.com)

### VICE PRESIDENT

**Jim Stollenwerk**  
1020 Hazelwood Court  
West Bend WI 53095  
Home: 262-306-0829  
Cell: 262-305-1483  
[jsastollen@charter.net](mailto:jsastollen@charter.net)

### SECRETARY

**Ken Grant**  
[kgrant@uwc.edu](mailto:kgrant@uwc.edu)

### TREASURER

**Allen E. Vick**  
2090 River Estate Lane  
Stoughton WI 53589  
[Norskelodge@aol.com](mailto:Norskelodge@aol.com)

### VP YOUTH DIVISION

**MaryAnn Bowman**  
P.O. Box 1451  
Waukesha WI 53187

### NE REGION VP

**Al Marcus**  
[maram@tds.net](mailto:maram@tds.net)  
Green Bay Phil. Soc.  
Northwoods Phil. Soc. (Iron  
Mountain)  
Outagamie Phil. Soc.  
Wisc. Postal Hist. Soc.

### EAST CENT. REGION VP

**Vern Witt**  
Fond du Lac Stamp Club  
Kettle Moraine Coin & Stamp Club  
Manitowoc Phil. Soc.  
Oshkosh Phil. Soc.  
Sheboygan Stamp Club

### SW REGION VP

**Valerie Cook**  
Badger Stamp Club  
Baraboo Stamp Club  
Janesville Stamp Club  
Monroe Stamp & Postcard Club

### SOUTH CENTRAL REGION VP

**Art Schmitz**  
[pescador@milwpc.com](mailto:pescador@milwpc.com)  
Waukesha County Phil. Soc.

### SE REGION VP

**Art Schmitz**  
[pescador@milwpc.com](mailto:pescador@milwpc.com)  
Am. Top. Assn. (Chap. 5)  
North Shore Phil. Soc. (Milw.)  
Northwestern Mutual Stamp Club  
Polish American Stamp Club  
Wauwatosa Phil. Soc.  
American Air Mail Soc. (Billy  
Mitchell Chapter)  
Germany Phil. Soc. (Chap. 18)  
Italian American Stamp Club  
Milwaukee Phil. Soc.

### CENTRAL REGION VP

**Mike Lenard**  
[mjlenard@aol.com](mailto:mjlenard@aol.com)  
Central Wisc. Stamp Club  
Chippewa Valley Stamp Club  
Northwoods Stamp & Coin  
Club (Rhineland)  
Wisconsin Valley Phil. Soc.

**Across the Fence Post** is the official publication of the Wisconsin Federation of Stamp Clubs, Inc., a 501c3 non-profit organization. WFSC also is a life member of the APS (since 1953). For more information about WFSC, please contact the Central Office.

AFTP is published monthly September through April, and every other month May through August (10 issues per year). News of Wisconsin collectors, club news and gratis original philatelic features are welcomed. The editor accepts submissions in any format, but prefers email if possible. Editor reserves the right to make editorial changes to submitted copy.

Material appearing in AFTP not carrying an individual copyright notice may be reproduced only by not-for-profit organizations, provided the author(s) and AFTP receive credit or attribution. All materials carrying an individual copyright notice are the sole property of the author(s).

Unless explicitly stated by an officer in conjunction with official WFSC business, opinions expressed by the editor or individual authors are not necessarily endorsed by the WFSC.

Submission deadlines for editorial and advertising materials are for the 1st of the month preceding month of publication (i.e. Jan. 1 for Feb. issue).

All show calendar information and all other editorial matter and listings, should be sent to: Wayne L. Youngblood, Editor AFTP, P.O. Box 111, Scandinavia WI 54977-0111. ([wystamps@gmail.com](mailto:wystamps@gmail.com)) phone: 715-467-4416.

Advertising material and payment should be sent to Dave Carney, Advertising Manager, AFTP, P.O. Box 55, Kimberly, WI 54136-0055. ([dcarneyl@new.rr.com](mailto:dcarneyl@new.rr.com)) phone: 920-687-9077. For a complete list of advertising rates and policies (display, classified and listings), request a copy from the advertising manager.

# Wiscopex '11 Set for Stevens Point, April 2-3

## Wiscopex '11 Set for Stevens Point, April 2-3

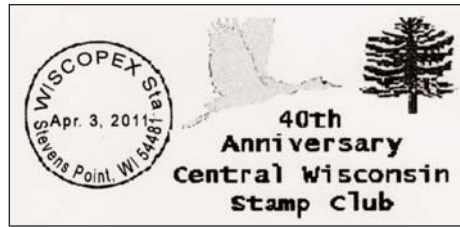
Wiscopex 2011 will be held April 2-3 at the Holiday Inn Stevens Point Convention Center, 1001 Amber Ave, Stevens Point. The hotel is east of the I-39/U.S. 10 intersection, north of Highway 10.

The show, with free admission and free parking, will celebrate the 40th anniversary of the host organization, Central Wisconsin Stamp Club, whose 32 members meet twice a month – at Plover and at Wisconsin Rapids.

Cacheted souvenir event covers saluting the CWSC and the 80th anniversary of the sponsoring Wisconsin Federation of Stamp Clubs will be for sale. A special pictorial cancel will also be used on the covers. A souvenir card on the same theme also will be for sale at the show.

The show will center around a dealers bourse and an array of collectors' exhibits, some competing for awards in general, and youth categories and others in a noncompetitive category. Wiscopex welcomes all classes and levels of philatelic exhibits, from youth or novice exhibits through the most advanced, championship-level displays, and from the mainstream to the esoteric.

Awards, including the best of show, will be



presented at a dinner at the Holiday Inn Saturday evening. Hotel rooms are available at the Holiday Inn and Holiday Inn Express (located next to Holiday Inn) for a special show rate, which is guaranteed through March 16. Amenities include an indoor pool and a fitness room. The Holiday Inn Express can be reached at (715) 341-8100.

Lunch and snack items will be for sale near the bourse area and at several nearby restaurants and stores.

Also at the dinner, a new member will be welcomed into the WFSC Philatelic Hall of Fame. The inductee's selection is expected to be ratified by club delegates at the annual WFSC meeting Saturday afternoon, starting at 1 p.m.

As an added feature, Wayne Youngblood, a Wisconsin collector, philatelic editor, director-at-large of the American Philatelic Society and an expert on the printing and production meth-

ods for United States stamps, will provide an introduction to modern United States errors, freaks and oddities.

The Federation's Dealer Recognition Award, given annually to a stamp dealer who has made significant contributions to the hobby in Wisconsin, will be presented.

The Stevens Point Post Office will have a sales table in the bourse area.

The Wisconsin Postal History Society will hold its traditional annual meeting at 9 a.m. Saturday, ahead of the show's opening, and will have a table with informational literature for collectors.

Other collecting societies, including the WFSC, will also have tables with literature and other information, and speakers will make presentations during the show on their areas of interest.

A silent auction of philatelic and non-philatelic items will be featured during both days of the show.

Information on Wiscopex '11 and exhibiting details are available online at the Federation's web site, [www.wfscstamps.org](http://www.wfscstamps.org), or from Larry Glenzer, show chairman, at [mcdillauto@att.net](mailto:mcdillauto@att.net), or by phone, (715) 341-6767. Information on member clubs, upcoming shows and other stamp-collecting matters also is available at the website.

## Last Call for Exhibits: Wiscopex 2011

The annual Wisconsin Philatelic Exhibition encourages competitive and non-competitive exhibits, and Wiscopex 2011 is no exception. Please share your knowledge of a particular area of interest and your love of the hobby by exhibiting at Wiscopex 2011, which will be held April 2-3 at the Stevens Point Holiday Inn and Convention Center.

For information and an application form, contact P. Sudevan, Wiscopex 2011 Exhibition Chairman, 1408 Strongs Ave., Apt. 403, Stevens Point WI 54481, by email at: [drpeter@Charter.net](mailto:drpeter@Charter.net), or phone (715) 342-1921.

The exhibition prospectus and applications also may be found at the Wisconsin Federation of Stamp Clubs website, [www.WFSCstamps.org](http://www.WFSCstamps.org).

### Central Wisconsin Stamp Club 1971 - 2011

Wis Co Pex '11  
April 2-3, 2011



Issued in Commemoration of the 40<sup>th</sup> Anniversary of CWSC

Wisconsin Federation of Stamp Clubs  
80<sup>th</sup> Convention

Sponsored by the Central Wisconsin Stamp Club

### CENTRAL WISCONSIN STAMP CLUB 40<sup>th</sup> ANNIVERSARY



1971 - 2011  
PLOVER - WIS. RAPIDS, WI

### WISCONSIN FEDERATION of STAMP CLUBS 80<sup>th</sup> CONVENTION



APRIL 2-3, 2011  
STEVENS POINT, WI

*The special cancel for Wiscopex '11 (top) celebrates the 40th anniversary of the Central Wisconsin Stamp Club. Both the souvenir card (above) and two show cachets celebrate that anniversary as well as the 80th anniversary of the Wisconsin Federation of Stamp Clubs.*

## Across the Fence Post Ad Rates (revised 1/06)

Type	Size	Commercial Rate	Club Rate
A	Full page (7 1/4" x 9 1/2")	\$42.00	\$33.75
B	Half page (7 1/4" x 4 3/4")	\$26.25	\$21.00
C	Large 1/4 page (4 3/4" x 6")	\$20.50	\$16.50
D	Medium 1/4 page (4 3/4" x 3 3/4")	\$14.75	\$11.75
E	1/8 page (2 1/4" x 3 3/4")	\$7.50	\$6.00
F	Econo Ad (2 1/4" x 2 3/4")	\$3.75	\$3.00
G	Reduced Business Card (2 1/4" x 1 1/4")	\$2.75	\$2.25
H	Back page (7 1/4" x 9 1/2")	\$57.75	N/A

Please make checks payable to :W.F.S.C.

# Exhibiting 101: Thematic Exhibiting, Part II

Robert R. Henak

In my last article, I explained what a thematic exhibit is and how thematic exhibits differ from other types. To summarize, a thematic exhibit tells its story by focusing on the subject matter of the philatelic material rather than on the country that released it or the rate paid.

This article begins the focus on what philatelic material can and should be used in a thematic exhibit to illustrate the thematic story line. Future articles will address additional permissible material, the storyline and write up of the exhibit, the technical requirements and, finally, what judges look for in a thematic exhibit.

Like any organized competitive endeavor, competitive thematic exhibits are expected to follow certain rules. One of the rules central to competitive thematic exhibits concerns the type of material that can be used to illustrate the story. Specifically, such material is limited to items that would be appropriate for postal or revenue exhibits, plus maximum cards.

A quality thematic exhibit uses a wide variety of philatelic "elements" to illustrate the story. An element is a particular type of philatelic material, whether it is a mint commemorative stamp, a stamped cover, a cancellation or a piece of postal stationery. As a general rule, each page of the thematic exhibit should have at least two different elements.

While I cannot describe here every type of philatelic material falling within these categories, and thus permissible for thematic exhibits, I will try to address the most common. An extensive list of permissible thematic elements is available at <http://www.americantopicalassn.org/exhibits.htm>.

The first category of materials appropriate for thematic exhibits is that appropriate for postal exhibits.

The most obvious type of philatelic material appropriate for thematic exhibits, therefore, is postage stamps. Mint stamps are better than used because the subject of the stamp is more easily seen when not covered by a cancel. CTOs (canceled-to-order stamps) should not be used at all if possible.

Keep in mind that different types of stamps comprise different "elements" in thematic exhibiting. Thus, a commemorative stamp is one element, a definitive another and an airmail stamp yet another.



**Philatelic material (stamps, covers and cancels) take center stage in a thematic exhibit.**

Semi-postal stamps (where part of the purchase price goes to charity), special stamps (such as Christmas stamps), official stamps, or even postage due stamps can provide additional elements, as can overprinted or precanceled stamps or those with perfins (perforated initials used to prevent theft and misuse of postage).

However, an exhibit illustrated solely with stamps would be quite boring and, by failing to reflect broad philatelic knowledge, would not merit a high award. Accordingly, thematic exhibits should include other philatelic items as well.



**Appropriate town-named cancels can add greatly to tell a story.**

First, any thematic point that can be illustrated by a stamp likewise can be illustrated by the same stamp properly used on cover (such as a mailed envelope or card). Of course, it is best if the stamp in question is the only one on the cover (colorful philatelically inspired covers with multiple stamps and overpaying the applicable rate are discouraged), or at least where it pays a separate part of the rate (as by paying the first-class portion of the total rate on a registered letter).

Second, markings provided by the post office or mail carriers also can provide thematic elements to illustrate the storyline. The cancellation, for instance, can do so through the post office name, the date or even the killer. Fancy cancels, often carved from wood or cork by

small-town postmasters with too much time on their hands in the late 1800s and the 1920s and 1930s, can provide an impressive contribution to a thematic exhibit.

More recently, pictorial cancellations have been popular, commemorating any number of anniversaries, institutions, people and events. Although philatelically inspired cachets on first-day covers or event covers are not appropriate for thematic exhibits, many first-day cancellations over the past 50 years have thematic elements and also would fit in such an exhibit.

Auxiliary labels or markings, whether the ubiquitous pointing fingers or others, also can further the thematic storyline.

Third, postage meters have long contained thematic elements, such as the eagle in U.S. meters or the horse in those of Venezuela. Postage meters also have long permitted advertising slugs to be added to the indicia of postage. These also are permitted in thematic exhibits.

A fourth type of non-stamp postal item to help illustrate a thematic exhibit is postal stationery. The imprinted indicia reflecting payment can have thematic aspects. Likewise, such stationery, whether aerogrammes, envelopes or postal cards, may be illustrated in a way that can further a thematic storyline.

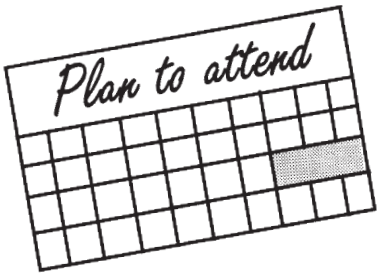
However, it is only the illustrations on the mint stationery as sold by the post office that may be used. Postal cards (those with preprinted postage) are in; the picture side of privately printed postcards is not. Illustrated postal stationery is in; post-production, philatelically inspired cachets, whether on FDCs or event covers, are out, even if sold by the post office (Remember the Rose Bowl event covers from a few years back?). Of course, while a cachet on an FDC or the picture side of a private postcard is not appropriate to illustrate a thematic exhibit, other aspects of those items can be, such as the postmark, the stamp or auxiliary markings.

Finally, although less common, production materials for stamps and postal stationery also are permissible in thematic exhibits. Thus, proofs, essays, artists drawings and the like can both add to the philatelic interest in a thematic exhibit and contribute substantially to a higher award level by demonstrating increased difficulty and greater philatelic knowledge.

Next month, I will address revenue materials and maximum cards in thematic exhibits.



**Fancy cancels, such as this 1930 pictorial Chile pepper registered example, can be an impressive addition to a thematic exhibit.**



# Show Calendar and Registry

List your show, bourse, auction or other event here!  
 Calendar listings are free for one WFSC member-club event per year. Classified advertising rates apply for all non-members and other events appearing in this section.

## 2010-2011 WFSC show schedule\*

\*Some dates and details may be subject to change, and there will likely be additional listings.

### March 5-6, 2011

**Stampfest '11**  
**Milwaukee Philatelic Society**  
 St. Aloysius Gonzaga Hall  
 1435 So. 92nd St., West Allis  
 Sat. 10 a.m. to 5 p.m., Sun 10 a.m. to 4 p.m.  
**Contact:** Carol Schutta, 10250 W. Sharon Ln., #5, Milwaukee, WI 53225  
 414-464-6994  
[harryncarolschutta@gmail.com](mailto:harryncarolschutta@gmail.com)

### April 2-3, 2011

**Wiscopex '11**  
 (Annual Convention and Philatelic Exhibition of the WFSC), hosted by:  
**Central Wisconsin Stamp Club**  
 Holiday Inn Stevens Point, 1001 Amber Ave., Stevens Point  
**Contact:** Larry Glenzer - 715-341-6767, [mcdillauto@att.net](mailto:mcdillauto@att.net)

### May 14, 2011

**Outapex '11**  
**Outagamie Philatelic Society**  
 VFW Post, 501 N. Richmond St., Appleton, 10 a.m. to 4 p.m.  
**Contact:** Al Marcus, 920-725-0798  
[allan.marym@hotmail.com](mailto:allan.marym@hotmail.com)

### May 27-29, 2011

**Arlington Heights, ILL**  
**Compex '11**  
**Chicago Area Philatelic Societies**  
 Forest View Educational Center, 2121 So. Goebbert Rd., Arlington Heights, Ill.

### March 19, 2011

**Baypex '11**  
**Green Bay Philatelic Society**  
 St. Matthew Catholic Church, Multipurpose Rm., 2575 So. Webster Ave. (parking in rear), Green Bay  
 9 a.m. to 4 p.m.  
**Contact:** Ray D. Perry, 920-469-8925, [fiveperrys@athenet.net](mailto:fiveperrys@athenet.net)

### April 17, 2011

**Danepep '11**  
**Badger Stamp Club**  
 Crowne Plaza Hotel  
 4402 E. Washington Ave. (across from East Towne Mall), Madison  
 10 a.m. to 5 p.m.  
**Contact:** Bob Voss, P.O. Box 35, McFarland, WI 53558 - 608-838-1033  
[lestamps@charter.net](mailto:lestamps@charter.net)

Other major non-WFSC shows near Wisconsin (right):

### July 15-17, 2011

**Crystal, Minn.**  
**Minnesota Stamp Expo**  
**Maplewood Stamp Club, Twin City Phil. Soc., Lake Minnetonka Stamp Club, Minn. Stamp Dealers Assoc**  
 Crystal Community Center 4800 N. Douglas Dr. North, Crystal, Minn.  
 Annual convention of Scandinavian Collectors Club



### Odd stuff? See me at Wiscopex 2011

Wayne Youngblood, P.O. Box 111  
 Scandinavia WI 54977-0111  
[wystamps@gmail.com](mailto:wystamps@gmail.com)

Always buying, selling and accepting consignments for Regency-Superior Auctions. 06.10



**Roger H. Oswald**  
 R.H.O. Postal History and Stamps  
 Buy, Sell, & Trade  
 Civil War Artifacts  
 Postcards & Stamps  
 Paper Americana

2514 Sheridan Pl.  
 Manitowoc, WI 54220  
 (920) 682-6793  
[rhpostalhistory@att.net](mailto:rhpostalhistory@att.net)

### WEEKLY INTERNET SPECIAL OFFERS!


U.S. AND FOREIGN, MINT AND USED, WHOLESALE LOTS, COLLECTION REMAINDERS, DEALER STOCKS

### ALL AT ATTRACTIVE NET PRICES

NO BIDDING, NO WAITING, SAME DAY SHIPPING


WM. B. ROBINSON  
[WBROB@HOTMAIL.COM](mailto:WBROB@HOTMAIL.COM)

09.11

Lake Edge Stamp Service (L.E.S.S.) 

Robert T. Voss  
 P.O. Box 35  
 McFarland, WI 53558

[lestamps@charter.net](mailto:lestamps@charter.net)  
 (608) 838-1033

12.11  Lots of Worldwide Stamps Bought and Sold

DANEPEX STA.  
 Madison, WI 53704



April 17, 2011

## DANEPEX '11

Sunday, April 17  
 10 a.m. - 4 p.m.

Crowne Plaza Hotel - Madison, WI  
 4402 E. Washington Ave. (across from East Towne Mall)

- Judged Philatelic Exhibits featuring a statewide single-frame championship competition
- 15 Dealers
- U.S. Postal Service Station
- Free Stamp Collection Appraisals
- Door Prizes
- Beginners Table for Youth and Adults instructions on the basics of stamp collecting & free stamps
- Free Admission/Parking
- Handicap Accessible
- Show Cover & Cancel commemorating the American Civil War

Sponsored by Badger Stamp Club

For more information call 608-838-1033; e-mail [lestamps@charter.net](mailto:lestamps@charter.net) 04.11

### I collect the Wisconsin Statehood issue ...and I need your help

**Wanted:** FDCs, first-day ephemera, USPOD Announcements, errors, color varieties, usages, event covers or anything else that might enhance an exhibit.



**John Pare**  
 405 Perimeter St.  
 Mt. Horeb WI 53572 [pare16@mhtc.net](mailto:pare16@mhtc.net) 04.11

 **METROPOLITAN STAMP COMPANY**  
 Of Chicago, Inc.   
 P.O. Box 657 Park Ridge, IL 60068-0657

Collections Bought & Sold  
 U.S. • Worldwide • U.S. & Foreign Ducks

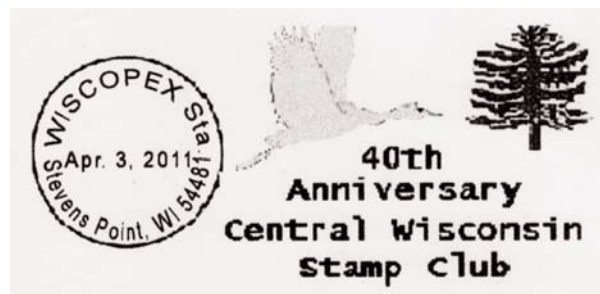
Ted Castro (815) 439-0142 FAX (815) 439-0143  
 Paul Enderle (847) 698-3351 FAX (847) 698-3381  
 E-Mail: [metrostamp@aol.com](mailto:metrostamp@aol.com)  
[www.metropolitanstamps.com](http://www.metropolitanstamps.com) 02.10

# WISCOPEX 2011

## STAMP SHOW Saturday-Sunday

April 2-3

Show opens at 10 a.m.



\* \* \*

**Location:** Holiday Inn Stevens Point Convention Center, 1001 Amber Ave, Stevens Point, Wis.  
(The hotel is east of the I-39/U.S. 10 intersection, north of Highway 10)

Special Rates Available for Overnight Stays at the *Holiday Inn* and *Holiday Inn Express*, next door.  
Rates are guaranteed through March 16. (715) 341-8100.

\* \* \*

**Show features:** Dealer Bourse  
Exhibits  
Show Covers  
Society Meetings  
Awards Dinner Saturday Evening  
Hall of Fame Nominee Induction  
Free Admission and Free Parking

Youth Table  
USPS Booth  
Souvenir Card  
Hobby Talks

\* \* \*

**Show Theme:** 40th Anniversary of the host,  
Central Wisconsin Stamp Club,  
and 80th Anniversary of the Sponsor,  
Wisconsin Federation of Stamp Clubs

*See You There!!*

