

ACROSS THE FENCE



Vol. XXXIII No. 6

July-August 2011

www.WFSCstamps.org

Newsletter of the Wisconsin Federation of Stamp Clubs

American Philatelic Society Chapter #350, American Topical Association Chapter #107

President's corner

Allen Carl Marcus Sept. 7, 1941-April 8, 2011

By Greg Schmidt, President of WFSC

As I begin this two-year term as Wisconsin Federation of Stamp Clubs president, it also brings with it a somber and reflective time. We have lost in the passing of Al Marcus a member who had an impact on all of us. In his passing someone has lost a son, brother, husband, father, grandfather, mentor, volunteer, show organizer, cachet designer, club officer, friend, family friend, fellow philatelist, humble & honorable man, good and decent individual. May we always remember and never forget his countless contributions to one and all. Goodbye old friend, R.I.P.



Greg Schmidt

* * *

Inside this issue:

- 1...President's Corner
- 1...Owney the Railway Mail Dog First Day Ceremony
- 1...New Editor Needed!
- 2...Clubs are Trump
- 3...WFSC Website Expanding
- 3...Exhibiting 101:
Upcoming National Shows II
- 3...Call for Materials
- 4...ATA's National Topical Stamp Show Held June 24-26
- 5...Letters to the Editor
- 5...Are You Wisconsin (Quiz)?
- 6...WFSC Show Schedule

Owney the Railway Mail Dog First Day Ceremony

On July 27, 2011, the United States Postal Service will release a Forever commemorative stamp honoring Owney, the mascot of the Railway Mail Service from 1888-97. The American Topical Association Chapter 5 and the Wisconsin Humane Society are planning a special first-day ceremony, complete with the new stamps and a Milwaukee first-day cancellation. The ceremony is intended both to celebrate the new Owney stamp and to publicize the good work of the Humane Society.

The story goes that Owney was a stray dog who wandered into the Albany, N.Y., post office in 1888 and ended up being adopted as an unofficial mascot by the railway mail service. He began to ride the railway post office cars throughout the country. Railway mail clerks considered him a good luck charm, as no train he rode ever was in a wreck.

The new stamp's connection to Milwaukee is that Owney is confirmed to have been present in Milwaukee in 1893 and on Feb. 27, 1896. He also was known to have been in Lancaster, Wis., although the exact date is unknown.

The July 27 ceremony will be held at the Wisconsin Humane Society, 4500 W. Wisconsin Ave., Milwaukee, Wis., although the exact time has not been set. Further information on the first-day ceremony can be found at: www.MilwaukeePhilatelic.org, or by email



from Rob Henak at henak8010@sbcglobal.net as it becomes available.

Collectors are free to create cachets to service their own first-day covers. The cancel probably will be available for 30 days following the ceremony for those who want to service covers but cannot make it to the ceremony.

More information on Owney is available at the National Postal Museum website, on Youtube, and on various other websites. Simply Google "Owney" for a wealth of information.



New Editor Needed!

Due to an impending out-of-state move, *Across the Fence Post* urgently needs a new editor. This appointed and non-reimbursed position is an important one for for the Wisconsin Federation of Stamp Clubs. *ATFP* not only serves as primary mouthpiece and calendar for the WFSC, but also provides educational and entertaining material for collectors in Wisconsin and other locations.

Please consider this opportunity. it's a great way to serve our organization and build important skills as well. If you are interested in full details, please contact Editor Wayne Youngblood (wystamps@gmail.com) or P.O. Box 111, Scandinavia WI 54977-0111.

The summer break prior to the September issue would be the perfect transition period!



July 27, 2011
Milwaukee, WI 53208

Clubs are Trump

By Maurice D. Wozniak

Creation of a souvenir envelope to commemorate a local event can be a satisfying and enjoyable project for a stamp club. At a meeting of the **Northwoods Philatelic Society**, Iron Mountain, Mich., this summer, members considered two anniversaries - the 120th anniversary of Dickinson County (Mich.) this year and the 175th anniversary of Michigan statehood in 2012. The club leaned toward the statewide event.

But a local event generated more interest, and the club moved ahead to prepare an illustrated cover for the relocation of the Spring Lake Animal Shelter to a new facility this fall.

The plan was to use the popular Adopt a Shelter Pet stamps on a cacheted envelope, which the club could prepare for about 50c each and sell for \$2, with proceeds going to help support the shelter.

"Forever" stamps make the selection of an appropriate stamp a bit easier than before for a project like this.

Other clubs, notably the **Milwaukee Philatelic Society**, regularly produce souvenir covers for sale to the public. Besides being fun,

such a project can modestly enhance a club's treasury or benefit a worthwhile cause.

* * *

Program ideas

A member of the **Badger Stamp Club**, Madison, gave a talk on topical collecting to the **Janesville Junior Stamp Club** at a recent meeting. Sharon Whitney showed examples and gave each child packets of topical stamps to help get their collections started.

Two members of **American Topical Association Chapter 5**, Waukesha, presented a program on Philippine stamps and included a photocopy of Franklin D. Roosevelt's Philippines collection as a handout.

At the meeting of the **ATA Chapter 5 Youth Club**, young members had an immersion on Owney, the "mail dog," whose life is being celebrated with a stamp issue in July. First, a book on Owney was read, then family members who have taken a stuffed "Owney" on overseas trips recounted his travels to the Far East. Young members of the club can take the animal on summer travels and keep a scrapbook of photos and other memorabilia.

Advertising covers (envelopes that bear commercial notices of products or services offered by mailers) comprised a show-and-tell program at the **Kettle Moraine Coin and Stamp Club**, West Bend.

Members of the **Waukesha County Philatelic Society** shared stories of the club's "Treasure Discovered!" meeting, telling how they found a valuable (to them) item buried in an album or junk box.

* * *

What others are doing

Tom Pleyte moved up the ladder to become president of the **Northwoods Philatelic Society**, Iron Mountain, Mich. Milt Wirth was elected vice president and Mark Pleyte and Jim Stearns continue as treasurer and secretary, respectively.

The **Green Bay Philatelic Society** re-elected its slate of officers: Clete Delvaux, president; Darryl Rupprecht, vice president; Ray Perry, secretary; and Kirk Becker, treasurer.

Alex Gill and Grace Zinkgraf, youth members of **American Topical Association Chapter 5**, Waukesha, were winners in the **Texas Philatelic Association's** annual holiday stamp design contest. Alex has won first place in his age group several times over the past several years.

Taking a cue from a report at the annual meeting of the Wisconsin Federation of Stamp Clubs, the **Kettle Moraine Coin and Stamp Club**, West Bend, offered some popular Wisconsin tourist sites for consideration as possible subjects for future United States stamps, including Holy Hill, Old World Wisconsin, Wisconsin Dells and Door County. The club sent its suggestions to the Stamp Suggestion Committee chairman.

* * *

Information for Clubs Are Trump is gathered from club newsletters. Please send them to Maurice D. Wozniak, 1010 Berlin St., Waupaca WI 54981.

Remember...

Please support **ATFP** advertisers.
They keep your newsletter healthy.
Tell 'em you saw it
in **ATFP!**

Wisconsin Federation of Stamp Clubs officers

PRESIDENT

Maurice D. Wozniak
1010 Berlin St.
Waupaca WI 54981
715-258-2025
mwoz@live.com

VICE PRESIDENT

Jim Stollenwerk
1020 Hazelwood Court
West Bend WI 53095
Home: 262-306-0829
Cell: 262-305-1483
jsastollen@charter.net

SECRETARY

Ken Grant
kgrant@uwc.edu

TREASURER

Allen E. Vick
2090 River Estate Lane
Stoughton WI 53589
Norskelodge@aol.com

VP YOUTH DIVISION

MaryAnn Bowman
P.O. Box 1451
Waukesha WI 53187

NE REGION VP

Vacant (due to death of Al Marcus)
Green Bay Phil. Soc.
Northwoods Phil. Soc. (Iron Mountain)
Outagamie Phil. Soc.
Wisc. Postal Hist. Soc.

EAST CENT. REGION VP

Vern Witt
Fond du Lac Stamp Club
Kettle Moraine Coin & Stamp Club
Manitowoc Phil. Soc.
Oshkosh Phil. Soc.
Sheboygan Stamp Club

SW REGION VP

Valerie Cook
Badger Stamp Club
Baraboo Stamp Club
Janesville Stamp Club
Monroe Stamp & Postcard Club

SOUTH CENTRAL REGION VP

Art Schmitz
pescador@milwpc.com
Waukesha County Phil. Soc.

SE REGION VP

Art Schmitz
pescador@milwpc.com
Am. Top. Assn. (Chap. 5)
North Shore Phil. Soc. (Milw.)
Northwestern Mutual Stamp Club
Polish American Stamp Club
Wauwatosa Phil. Soc.
American Air Mail Soc. (Billy Mitchell Chapter)
Germany Phil. Soc. (Chap. 18)
Italian American Stamp Club
Milwaukee Phil. Soc.

CENTRAL REGION VP

Mike Lenard
mjlenard@aol.com
Central Wisc. Stamp Club
Chippewa Valley Stamp Club
Lakeland Stamp & Coin Club
Wisconsin Valley Phil. Soc.

Across the Fence Post is the official publication of the Wisconsin Federation of Stamp Clubs, Inc., a 501c3 non-profit organization. WFSC also is a life member of the APS (since 1953). For more information about WFSC, please contact the Central Office.

ATFP is published monthly September through April, and every other month May through August (10 issues per year). News of Wisconsin collectors, club news and gratis original philatelic features are welcomed. The editor accepts submissions in any format, but prefers email if possible. Editor reserves the right to make editorial changes to submitted copy.

Material appearing in ATFP not carrying an individual copyright notice may be reproduced only by not-for-profit organizations, provided the author(s) and ATFP receive credit or attribution. All materials carrying an individual copyright notice are the sole property of the author(s).

Unless explicitly stated by an officer in conjunction with official WFSC business, opinions expressed by the editor or individual authors are not necessarily endorsed by the WFSC.

Submission deadlines for editorial and advertising materials are for the 1st of the month preceding month of publication (i.e. Jan. 1 for Feb. issue).

All show calendar information and all other editorial matter and listings, should be sent to: Wayne L. Youngblood, Editor ATFP, P.O. Box 111, Scandinavia WI 54977-0111. (wystamps@gmail.com) phone: 715-467-4416.

Advertising material and payment should be sent to Dave Carney, Advertising Manager, ATFP, P.O. Box 55, Kimberly, WI 54136-0055. (dcarney@new.rr.com) phone: 920-687-9077. For a complete list of advertising rates and policies (display, classified and listings), request a copy from the advertising manager.

WFSC Website Expanding

Steve Kluskens, WFSC Webmaster

The primary purpose of the Wisconsin Federation of Stamp Clubs internet website (wfscstamps.org, wisconsinstamps.org) is to bring collectors and prospective collectors to clubs. That's why visitors to the site are greeted with a large map of Wisconsin showing where each club is located.

This spring, however, the site has expanded in two directions, inward and outward. Outwardly, a new page of links has been added, connecting the site to other philatelic organizations. The website has long had a dealers page, whose rank among the most-visited pages on the site varies annually between third and fourth. In fact, if you search for "Wisconsin stamp dealers" using Google, the most popular search engine, the WFSC site ranks second.

The dealers page is a service for dealer-members of the WFSC, and is complemented by an advertisers' page for non-members. The new links page is specifically for non-profit philatelic organizations, whether regional, national or local. The page has been a long time coming, due to the daunting number of philatelic groups. Right now there is just a start of a list on the links page; please send any suggestions you have to webmaster@wfscstamps.org. The inward expansion of the website is within the growing realm of the Wisconsin Postal History Society (WPHS). WPHS is a statewide club that meets annually at Wiscopex, and occasionally at other shows. Under Darren Mueller's guidance, the society has begun using the WFSC website as a virtual clubhouse, bridging the distance between WPHS's far-flung mem-

bers. At the core is an online forum, where members converse much as if they were in the same room. Additionally, the society's archive of past bulletins and publications are stored and linked within the forum. The forum and archive are protected for WPHS members' use by a password. Though not quite as impressive as a sliding peephole and a burly doorman, the password keeps out the spammers, spiders and trolls that often plague more open online forums.

For more information about the Wisconsin Postal History Society, contact William Robinson, Box 12492, Green Bay, WI 54307-2492, or wbrob@hotmail.com. If you have questions about – or updates for – the WFSC website, please contact Steve Kluskens, 1370 Canton Av, Milton MA 02186, or by email at: webmaster@wfscstamps.org.

Exhibiting 101: Upcoming National Shows II

Robert R. Henak

I hope that everyone was able to take advantage of everything that the National Topical Stamp Show in Brookfield had to offer in June. A focused show such as the NTSS provides a rare opportunity to totally immerse oneself in a particular area of philately, in this case topical/thematic collecting and exhibiting.

The American First Day Cover Society's Americover 2011 provides a similar opportunity to focus on collecting and exhibiting first-day covers (FDCs) and illustrated mail. Americover will be held Aug. 5-7, 2011, at the Wyndham West Indianapolis Hotel, 2544 Executive Dr., Indianapolis, Ind.

Like Milcopex and NTSS, Americover is a national-level, World Series of Philately show. As such, it will have at least 125 frames of competitive, multiframe exhibits – again, with the primary focus on FDCs. The grand award winner will be eligible to compete in the American Philatelic Society's Champion of Champions competition at Stampshow 2012.

Outside of Americover, few shows have more than a couple of FDC exhibits. Americover, therefore, is the place to go if you want to compare FDC exhibiting styles and learn how to put together such an exhibit. For more information on Americover 2011, see www.afdcs.org/amercover/amercover.html.

Another special opportunity within driving distance in the next few months is the APS Stampshow 2011, Aug. 11-14, 2011, at the Greater Columbus Convention Center, 400 North High St., Columbus, Ohio. Stampshow is the annual convention and exhibition of the American Philatelic Society, and is the largest annual stampshow in the United States. Stampshow provides by far the greatest learning opportunities for prospective exhibitors. While a show like Milcopex or NTSS usually has around 150 frames of competitive exhibits to study and enjoy, Stampshow can have three or four times that many. Stampshow also will have meetings of many different philatelic societies and study groups and one of the largest courses you will see in the United States.

You can find more information on Stampshow 2011 at the following APS website: www.stamps.org/stampshow/index.htm.

Of course, it also is time to get your applications in to exhibit at Milcopex, Sept. 16-18, 2011. As I noted previously, Milcopex is Wisconsin's own national-level stamp exhibition. Accordingly, competitive exhibits entered in the national-level classes are judged by APS standards and qualify for Milcopex medals and national-level awards. The grand award winner qualifies to compete in the APS Champion of Champion competition at Stampshow 2012.

Applications to exhibit competitively in the national classes at Milcopex are available at www.MilwaukeePhilatelic.org/Milcopex/Milcopex.html, and should be submitted by July 15,

2011, although later entries will be accepted if frame space allows.

However, Milcopex also encourages newer exhibitors and competitive exhibits with a local-class subject to less restrictive local judging standards and judged by Wisconsin Federation of Stamp Clubs-accredited judges. This is a great way to try out exhibiting or to test a new type of presentation without being bound by national-level APS standards. As in any local Wisconsin exhibition, locally judged competitive exhibits compete for First, Second and Third place ribbons, and one exhibit will be awarded the Milcopex Local Best in Show.

Finally, Milcopex offers the opportunity to exhibit non-competitively for those who wish to share their material and love for philately but do not want their efforts to be judged. Non-competitive exhibits can be four or eight pages long, or one or more full frames of 16 pages each. Locally judged youth exhibits, likewise, can be four, six, 16, 32 or 48 pages long.

Applications for locally judged adult and youth competitive exhibits and for non-competitive exhibits are available at the Milcopex website, www.MilwaukeePhilatelic.org/Milcopex/Milcopex.html, and should be submitted by Aug. 15.

Across the Fence Post Ad Rates (revised 1/06)

Type Size	Commercial Rate	Club Rate
A Full page (7 1/4"x(9 1/2"))	\$42.00	\$33.75
B Half page (7 1/4" x 4 3/4")	\$26.25	\$21.00
C Large 1/4 page (4 3/4"x 6")	\$20.50	\$16.50
D Medium 1/4 page (2 3/4" x 3 3/4")	\$14.75	\$11.75
E 1/8 page (2 1/4" x 3 3/4")	\$7.50	\$6.00
F Econo Ad (2 1/4" x 2 3/4")	\$3.75	\$3.00
G Reduced Business Card (2 1/4" x 1 1/4")	\$2.75	\$2.25
H Back page (7 1/4" x 9 1/2")	\$57.75	N/A

Please make checks payable to: W.F.S.C.

Call for Materials

Your input to *Across the Fence Post* is urgently needed. Please consider writing a letter to the editor, a feature or even a caption for your favorite cover or philatelic item. We'd even like to see an ongoing column, such as Rob Henak's popular series on exhibiting (found on this page).

Please send submissions to Editor Wayne Youngblood (wystamps@gmail.com) or P.O. Box 111, Scandinavia WI 54977-0111.

ATA's National Topical Stamp Show Held

Wayne L. Youngblood

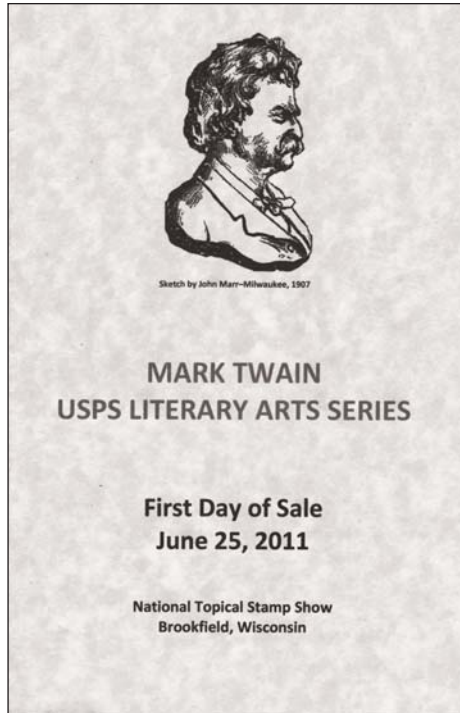
Several hundred topical and thematic collectors descended upon Milwaukee recently, during the American Topical Association's National Topical Stamp Show 2011, which was held June 24-26 at the Sheraton Milwaukee Brookfield Hotel.

The show certainly wasn't a surprise to those who are members of American Topical Association Chapter 5, or the Milwaukee Philatelic Society, as both groups and other dedicated volunteers put in a long and hard-working weekend to ensure the show went well. To that end, the show was a huge success!

Although quarters were cramped for some events and the show was held in two rooms, collectors had little problem locating all the dealers and exhibits, with most dealers reporting extremely strong sales.

An unexpected and very welcome last-minute addition to the program was a first-day ceremony for the new Mark Twain "Forever" stamp, which was officially released June 25 in Hannibal, Mo., but also was authorized for the same day in Brookfield, along with a special pictorial cancel.

Coming through in the clinch for ATA was Chris Lazaroff, president of the American First



Day Cover Society and a veteran of putting first-day events together. With little notice, he was able to gain authorization, have a special cancel made and even line up a speaker from the Milwaukee post office.

More than 100 collectors and other interested people crowded into a tiny meeting room, where the entertaining ceremony was held.

Numerous meetings and seminars also were held during the three-day



At left is the first-day ceremony program created for the Mark Twain stamp. Above is the special pictorial cancel created for the event.

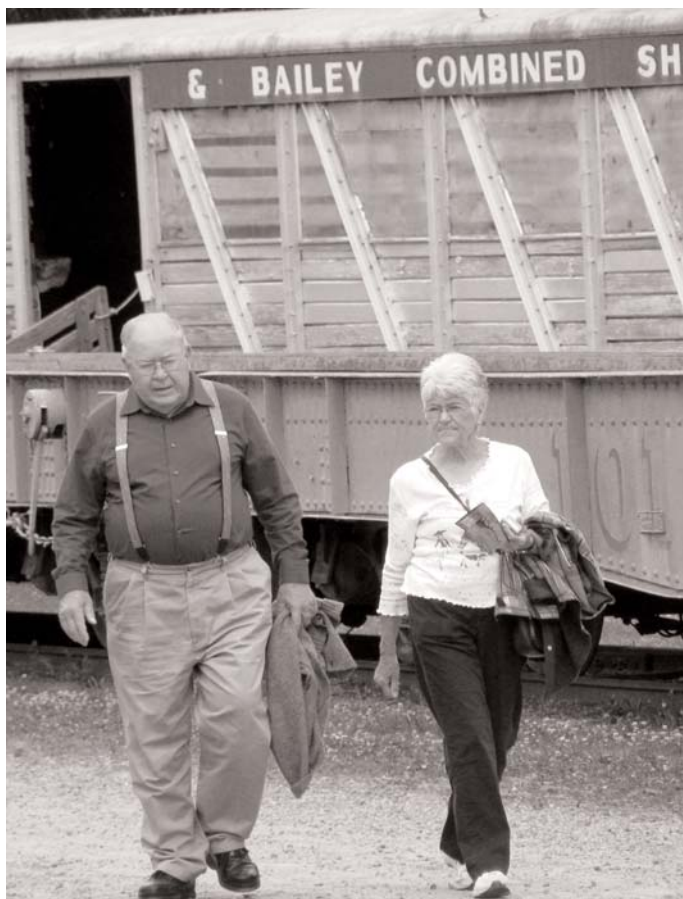
event, including a board meeting of the Wisconsin Federation of Stamp Clubs.

Two tours were held in conjunction with the show. A pre-show, half-day tour on Thursday treated attendees to the sites near Milwaukee, including the Harley-Davidson Museum and the Sprecher Brewery.

An outstanding full-day tour after the show allowed ATA and WFSC members the opportunity to visit the Circus World Museum in Baraboo, the International Crane Foundation and take a boat tour of the Upper Dells, with a lunch provided by ATA Chapter 5.

Among those WFSC members who struck gold at the show are Robert J. Mather, for *The Donkey in Man's World* (also the Biology Unit Award); Fred Ziemann, for *Wolf*; Roland Essig, for *Man Beneath the Sea*; and Larry T. Nix, for *America's Library: the Library of Congress* (also the Americana Unit Award).

An additional treat was a visit to the show by Milwaukee native and founder of the ATA, Jerry Husak, along with his wife, Sally. Let's hope ATA will visit us again soon!



Above: Roland and Judy Essig stroll the Circus World Museum grounds in Baraboo on the full-day post-NTSS bus tour held June 27. Above right: Show chairman Bob Mather gets a lesson in flight movement at the International Crane Foundation.

Letters to the Editor

Post Office murals

I read the *Across the Fence Post* newsletter for May-June 2011 and noticed your interest in post office murals. The West Bend, Wis., post office has a mural very similar to the one depicted on the newsletter. Hope this helps.

— Alex Gill
via email

Thank you, Alex, Roland Essig also noted the existence of this mural. Too many are still being neglected or destroyed, not only in Wisconsin, but all over the country.

— Wayne

The Stoughton Post Office has a nice 1930s airmail theme mural. It's in good condition and shows mail bags being loaded on an airplane.

— Allen Vick
via email

Go Green!

I'm turning green with envy at the ingenious combination of a stamp club meeting notice with environmental considerations. I just received a non-meeting notice card from the Germany Philatelic Society, and it blew my mind, what there is of it.

The spotty appearance of the card looked

strange, but after I'd read that there would be no July meeting, I read the fine print at the upper-left corner. First, there was this message: "Small steps can make a big difference for our environment. Be part of change. Go green."

Then this: "Don't throw this note away. Plant and watch it grow! Step 1. Prepare a pot of soil or small patch of garden. Step 2. Place card on top and cover with a 1/4" fine layer of soil. Part 3. Water daily and allow sunlight."

There are two other green elements on this card. On the reverse side is a stylized array of varying shades of green petals as if a green flower is blooming with the message "Go Green" at the bottom. And, to complete the message, the stamp is the "GO GREEN" forever stamp. I don't have a green thumb, but we'll see what happens when I plant this non-meeting notice.

— Art Schmitz
via email

Art, what a great piece of topical postal history! These seed-embedded cards have been gaining in popularity the past few years.

The real dilemma now is: Do you save the card for your collection or do you plant it as it was intended? A new "mint, never sprouted" category might even apply!

— Wayne

Are You Wisconscious?

(An abridged philatelic quiz formulated by Fred Skvara for the NTSS program. All answers are found on U.S. stamps.)

1. Born in a log cabin near Pepin, Wis., Feb. 7, 1867. Author of several books about pioneer life in the 19th century.

2. First European explorer of the Wisconsin region when he arrived on the shores of Green Bay in 1634.

3. His wife founded the first kindergarten in the United States in Watertown, Wis., in 1856.

4. The first person to receive two Nobel Prizes in the same field was born in Madison.

5. Born in Ripon, Wis., in 1859, she established the League of Women Voters in 1919.

6. His statue, part of the National Statuary Hall Collection in Washington, D.C., can be found on the second floor of the house connecting corridor.

7. Twentieth Century American landscape painter who was born in Sun Prairie, Wis., in 1887. Received the Medal of Freedom from President Gerald Ford in 1977.

8. In 2006 this company changed its NYSE symbol to HOG.

9. American novelist and playwright born in Madison, and winner of three Pulitzer Prizes: one for his novel, *The Bridge of San Luis Rey*, and two for his plays, *Our Town* and *The Skin of Our Teeth*.

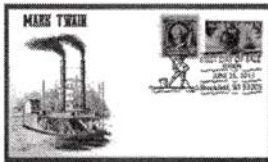
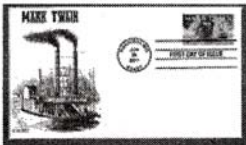
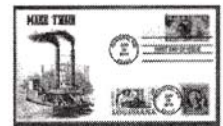
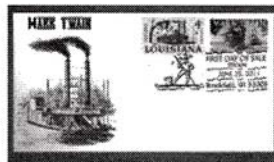
10. Designed by architect, interior designer and educator who was born in Richland Center, Wis., in 1867.

Answers may be found on Page 6.

Mark Twain FDCs

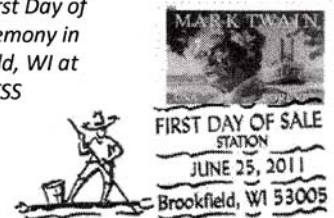
Available in two different cachet designs: Either Huck Finn fishing or an old Riverboat
Three Different Cancels:

Standard Four Bar from Hannibal, MO; First Day of Sale from Brookfield, WI (I designed this cancel); and the Scouts on Stamps cancel available at NTSS in Brookfield, WI



Three stamp combo with 10c Twain
\$7.00 each

I designed this cancel
for the First Day of
Sale Ceremony in
Brookfield, WI at
NTSS

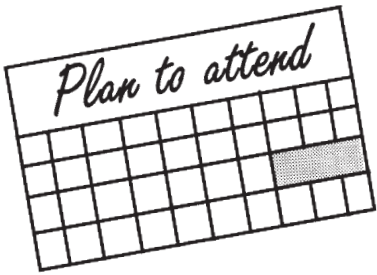


Single stamp FDC
\$3.00 each

Both cachets are available
with any of the three
cancels above

Although not all are shown - ALL 2 stamp combos are
available with either cachet and either the Hannibal four
cancel or the Brookfield First Day of Sale cancel

Please add \$1.00 for p&h. Mail Orders with payment to: Chris Lazaroff; P.O. Box 624; Simpsonville, SC 29681



Show Calendar and Registry

List your show, bourse, auction or other event here!
 Calendar listings are free for one WFSC member-club event per year. Classified advertising rates apply for all non-members and other events appearing in this section.

2011 WFSC show schedule*

*Some dates and details may be subject to change, and there will likely be additional listings.

July 30

6th Lakeland Stamp and Coin Club Summer Show
Lakeland Stamp and Coin Club
 Woodruff Town Hall, Hwy. 47E
Contact: Dan Carney, 6390 Bemie-Lou Dr., Hazelhurst WI 54531
 (715) 356-7595

Sept. 16-18

Milcopex '11
Milwaukee Philatelic Society
 Wyndham Milwaukee Airport & Conv.Center, 4747 So. Howell Ave., Milwaukee WI
Contact: Robert Henak, MPS, P.O. Box 170832, Milwaukee, WI 54317
 (414) 351-1519
henak8010@sbcglobal.net,
www.MilwaukeePhilatelic.org

Oct. 8

Monroe Stamp and Postcard Show
Monroe Stamp and Postcard Club
 Monroe Moose Lodge, 639 3rd Ave., Monroe WI, 9 a.m. to 2:30 p.m.
Contact: Earl Button, 1214 Second St., Monroe WI 53566
 (608) -328-2827
ebutton@tds.net

Answers to quiz found on Page 5:

1. Laura Ingalls Wilder; 2. Jean Nicolet;
3. Carl Schurz; 4. John Bardeen; 5. Carrie Chapman Catt;
6. Marquette; 7. Georgia O'Keeffe;
8. Harley-Davidson; 9. Thornton Wilder; 10. Guggenheim Museum.

Oct. 22

Sheboygan Stamp and Coin Show
Sheboygan Stamp Club
 Municipal Building, 375 Buffalo St., Sheboygan Falls WI
Contact: Barbara Stohl, P.O. Box 907, Sheboygan WI 53082 (920) 458-4883

Oct. 29-30

Tosapex '11
Wauwatosa Philatelic Society
 St. Aloysius Gonzaga Hall 1435 So. 92nd St., West Allis WI, Sat. 10 a.m. to 5 p.m., Sun. 10 a.m. to 4 p.m.
Contact: John Fagan(262) 251-0617
faganfalls@aol.com

Nov. 19

Oshkosh Stamp Bourse
Oshkosh Philatelic Society
 Elk's Club, 175 Fernau Ave., Oshkosh, WI, 10 a.m. to 4 p.m.
Contact: Dave Carney, 920-687-9077,
dcarney1@new.rr.com

Other major non-WFSC shows in or near Wisconsin (right):

July 9-10

Prospect Heights, Ill.
MSDA Summer Stamp Show
Midwest Stamp Dealers Assoc.,
 Holiday Inn (formerly Wingate)
 600 Milwaukee Ave.

July 15-17

Crystal, Minn.
Minnesota Stamp Expo
Maplewood Stamp Club, Twin City Phil. Soc., Lake Minnetonka Stamp Club, Minn. Stamp Dealers Assoc
 Crystal Community Center 4800 N. Douglas Dr. North, Crystal, Minn.
 Annual convention of Scandinavian Collectors Club

Aug. 1-6

Middleton, Wis.
90th Precancel Stamp Society Convention
 Madison Marriott West
 1313 John Q. Hammons Dr.

Aug. 6-7

Niles, Ill.
NSDA Summer Stamp Show
 White Eagle Banquet Hall
 6839 N. Milwaukee Ave.

Aug. 20-21

Lombard, Ill.
MSDA Summer Stamp Show West, Midwest Stamp Dealers Assoc
 Lindner Conference Center
 610 E. Butterfield Rd.

Oct. 22-23

Prospect Heights, Ill.
MSDA Fall Stamp Show
Midwest Stamp Dealers Assoc.
 Comfort Inn (formerly Wingate)
 600 Milwaukee Ave.

Nov. 18-20

Itasca, Ill.
Chicagopex '11
Chicago Philatelic Society
 Westin Chicago Northwest Hotel, 400 Park Blvd.

Nov. 26-27

St. Paul, Minn.
Metropex '11
Maplewood Stamp Club
 Kelly Inn, I-94 & Marion St.

Dec. 3-4

West Allis, Wis.
FrosteepeX '11
 St. Aloysius Gonzaga Hall
 1435 So. 92nd St.

Dec. 10-11


Lombard, Ill.
MSDA Winter Stamp Show
Midwest Stamp Dealers Assoc.
 Lindner Conference Center, 610 E. Butterfield Rd.

I collect the Wisconsin Statehood issue ...and I need your help

Wanted: FDCs, first-day ephemera, USPOD Announcements, errors, color varieties, usages, event covers or anything else that might enhance an exhibit.





John Pare
 405 Perimeter St.
 Mt. Horeb WI 53572 pare16@mhtc.net 04.11

Lake Edge Stamp Service (L.E.S.S.) 

Robert T. Voss
 P.O. Box 35
 McFarland, WI 53558

lestamps@charter.net
 (608) 838-1033

12.11 Lots of Worldwide Stamps Bought and Sold 



Odd stuff? Always!

What can I find for you?

Wayne Youngblood, P.O. Box 111
 Scandinavia WI 54977-0111
wystamps@gmail.com

Always buying, selling and accepting consignments for Regency-Superior Auctions.



 **METROPOLITAN STAMP COMPANY** 
 Of Chicago, Inc.
 P.O. Box 657 Park Ridge, IL 60068-0657


Collections Bought & Sold
 U.S. • Worldwide • U.S. & Foreign Ducks

Ted Castro (815) 439-0142 Paul Enderle (847) 698-3351
 FAX (815) 439-0143 FAX (847) 698-3381
 02.10 E-Mail: metrostamp@aol.com
www.metropolitanstamps.com

Roger H. Oswald
 R.H.O. Postal History and Stamps

Buy, Sell, & Trade
 Civil War Artifacts
 Postcards & Stamps
 Paper Americana

2514 Sheridan Pl.
 Manitowoc, WI 54220
 (920) 682-6793
rhpostalhistory@att.net



12.11

WEEKLY INTERNET SPECIAL OFFERS!

U.S. AND FOREIGN, MINT AND USED, WHOLESALE LOTS, COLLECTION REMAINDERS, DEALER STOCKS

ALL AT ATTRACTIVE NET PRICES

NO BIDDING, NO WAITING, SAME DAY SHIPPING

09.11 **WM. B. ROBINSON**
WBROB @ HOTMAIL.COM