

ACROSS THE FENCE



Vol. XXVIII No. 10

Dec. 2006

<http://www.WFSCstamps.org/>

Newsletter of the Wisconsin Federation of Stamp Clubs

American Philatelic Society Chapter #350, American Topical Association Chapter #107

President's corner

Finding a Life

By Maurice D. Wozniak, President of WFSC

The black-and-white photograph of a slim girl in a soiled smock and rolled-up sleeves, standing impassively in front of a cotton mill in Vermont was arguably the most powerful stamp image of the Celebrate the Century series with which the United States Postal Service marked the millennium change. It is the Child Labor Reform stamp at the lower right of the sheetlet of stamps representing events of the 1910s.

That the image was captured by Lewis Hine, a photographer from Oshkosh – whose sense of social justice dogged him to his grave – made the image even more compelling for us Wisconsin stamp collectors.

Elizabeth Winthrop, a talented, award-winning writer of books for children, was inspired by the photo she saw in a show of Hine's work to write a novel of the girl's life, *Counting on Grace*. Then she set about trying to discover who the girl really was. I found a report about that search in a *Smithsonian* magazine (Sept. 2006) I read at a library in Arkansas this fall.

Winthrop's report is a fascinating detective story with a special appeal to philatelists.

Hine's photos helped comfortable, middle-



Lewis Hine's 1910 photograph of an "anaemic little spinner" (a young girl named Addie Laird) is an iconic image of child labor issues of the early 20th century. The photo also became one of the most moving images in the USPS' 150-stamp Celebrate the Century series (Scott 31830).

class America focus on the tribulations of miners and factory workers such as the girl he defined in his notes as "Anaemic little spinner in North Pownal Cotton Mill" in Vermont. He took the picture of the girl known as Addie Laird in August 1910.

The USPS had failed to locate her in 1998

when the image was used on a 32c stamp. "But it turns out they didn't look hard enough," Winthrop wrote.

In a 1910 Census form from Bennington County, Vt., Winthrop found Mrs. Adalaid Harris, who was then living with six orphaned or abandoned grandchildren, including Addie Card (not Laird), then 12. Winthrop and another researcher then traced Addie's life through documents in town offices, historical societies, funeral homes and Social Security records.

They found Addie's mother had died when the girl was two. She had gone to work at the mill when she was eight and had to stand on a soapbox to reach the bobbins. She changed her name to Pat and married twice (both times unhappily) Winthrop wrote in the *Smithsonian* article. She lost custody of a biological daughter and adopted an illegitimate newborn baby girl. The two moved from eastern mill towns to New York City.

She survived on a Social Security check and lived in low-income housing and died at the age of 94. "She didn't have anything to give, but she gave it," a great-granddaughter told Winthrop. *President's Corner continued on Page 3*

Inside this issue:

- 1...President's Corner
- 2...Clubs are Trump
- 2...Hall of Fame nominations
- 3...Take a long-term view
- 3...Editor's Christmas card
- 4...It's not always as it looks



The Party Continues

WISCOPEX '07

May 5, 2007

Clubs are Trump

By Maurice D. Wozniak, President of WFSC

Many stamp clubs use this Christmas and New Year season as a happy excuse for a party. With or without a philatelic angle, a pot luck or restaurant dinner provides an opportunity for family members to join in the fun, and some club members who no longer are regular attendees at meetings might try to make it to a meal. Some clubs dip into their treasury to help pay for the restaurant meals or provide a special dessert for all.

Gifts or charitable contributions are not universal features, but good wishes seem to be expected.

So we at the "Clubs Are Trump" department would like to add our fervent hopes that all of you experience the joy of the season and have a happy and satisfying 2007.

* * *

Program ideas

A clothesline exhibit at a **Kettle Moraine Coin and Stamp Club**, West Bend, meeting was judged a success. (A "clothesline" is an old-time method of stamp display that seems to have gone out of favor.) Members provided special collections, philatelic covers, blocks and foreign stamps for each other's edification.

The Outagamie Philatelic Society, Appleton, held Dealers' Night at its October meeting. Local dealers agreed to provide material catering to members' needs, if possible.

A record 127 lots comprised the **Kenosha Stamp & Cover Club** auction in October.

The Waukesha County Philatelic Society scheduled a talk on comic book collecting to tie in with the U.S. Postal Service Super Hero stamps – DC Comics in 2006, and Marvel Comics in 2007.

What others are doing

The North Shore Philatelic Society, which meets in Whitefish Bay, has prepared a new tri-fold brochure to interest potential new members. The brochure includes the club logo, informally describes the club and its meetings, the benefits of membership and ways to get further information (the Wisconsin Federation of Stamp Clubs website could be added). Finally, there's a membership application.

As part of a National Stamp Collecting Month observation, the **Kettle Moraine Coin and Stamp Club**, West Bend, had two frames with various materials at the local library. The display included infor-

mation about the club.

The Green Bay Philatelic Society also provided a public display at the request of the postmaster at the Packerland Post Office. It was a celebration of Ben Franklin on stamps.

The *Post Scripts* newsletter of the **Kenosha Stamp & Cover Club** included brief tips on caring for a stamp collection – use acid-free pages that might house your items, avoid dampness, handle items with clean hands and tongs. The writer

suggested the future of self-adhesive stamps remains in question.

Carol Schutta, editor of the *Milwaukee Philatelist*, noted in the newsletter that with the onset of cooler weather she plans to resume baking chocolate chip cookies for **Milwaukee Philatelic Society** meetings. Now there's an incentive to attend!

Information for "Clubs Are Trump" is gathered from club newsletters. Please send newsletters to Maurice D. Wozniak, 1010 Berlin St., Waupaca WI 54981.

Wisconsin Philatelic Hall of Fame nominations called for

Nominations are now being accepted for the 2007 Wisconsin Philatelic Hall of Fame. **The deadline is Dec. 31, 2006.** Qualifications required of nominees include:

1.) Contributions of purely local club nature shall not be the sole reason for selection to the Hall of Fame.

2.) A deceased philatelist may not be nominated or considered for selection until three years after death.

Submit your nomination(s), together with a statement identifying the nominee, a short philatelic biography and the reasons why that person should be selected for the Wisconsin Philatelic Hall of

Fame to: Chairman, Wisconsin Philatelic Hall of Fame Committee, Verna Shackleton, 425 N. Linwood Ave., Apt 110, Appleton WI 54914.

Questions may be answered by e-mail corosec@sbcglobal.net.

Only WFSC member clubs may submit nominations, and each nomination must be seconded by two other member clubs. The nominating club is responsible for making arrangements with the seconding clubs to provide those seconds. The nomination and seconds should all be sent to the Chairman of the Hall of Fame Committee in one mailing.

Wisconsin Federation of Stamp Clubs officers

PRESIDENT

Maurice D. Wozniak
1010 Berlin St.
Waupaca, WI 54981
715-258-2025
berliners2@sbcglobal.net

VICE PRESIDENT

Hank Schmidt
P.O. Box 3153
Oshkosh, WI 54903
artcoy@vbe.com

CENTRAL OFFICE/SECRETARY Vacant

TREASURER

Paul T. Schroeder
1750 W. 5th Ave., Apt. F
Oshkosh, WI 54902
920-426-2059

VP YOUTH DIVISION

MaryAnn Bowman
P.O. Box 1451
Waukesha, WI 53187

NE REGION VP

Al Marcus (maram@tds.net)
Green Bay Phil. Soc.
Northwoods Phil. Soc. (Iron Mountain)
Outagamie Phil. Soc.
Wisc. Postal Hist. Soc.

EAST CENT. REGION VP

Vern Witt
Fond du Lac Stamp Club
Kettle Moraine Coin & Stamp Club
Manitowoc Phil. Soc.
Oshkosh Phil. Soc.
Sheboygan Stamp Club

SW REGION VP

Valerie Cook
Badger Stamp Club
Baraboo Stamp Club
Janesville Stamp Club
Monroe Stamp & Postcard Club
Rockford Stamp Club

SOUTH CENTRAL REGION VP

Art Gaffney
stehlee@aol.com
Waukesha County Phil. Soc.

SE REGION VP

Art Schmitz
piscine@execpc.com
Am. Top. Assn. (Chap. 5)
Belle City Stamp Club
Kenosha Stamp & Cover Club
North Shore Phil. Soc. (Milw.)
Northwestern Mutual Stamp Club
Polish American Stamp Club
Wauwatosa Phil. Soc.

Art Petri

American Air Mail Soc.
(Billy Mitchell Chapter)
Germany Phil. Soc.
(Chap. 18)
Italian American Stamp Club
Milwaukee Phil Soc.

CENTRAL REGION VP

Gregg Greenwald
bluebird@tznnet.com
Central Wisc. Stamp Club
Chippewa Valley Stamp Club
Northwoods Stamp & Coin Club (Rhineland)
Wisconsin Valley Phil. Soc.

Across the Fence Post is the official publication of the Wisconsin Federation of Stamp Clubs, Inc., a 501c3 non-profit organization. WFSC also is a life member of the APS (since 1953). For more information about WFSC, please contact the Central Office.

AFTP is published monthly September through April, and every other month May through August (10 issues per year). News of Wisconsin collectors, club news and gratis original philatelic features are welcomed. The editor accepts submissions in any format, but prefers email if possible. Editor reserves the right to make editorial changes to submitted copy.

Material appearing in AFTP not carrying an individual copyright notice may be reproduced only by not-for-profit organizations, provided the author(s) and AFTP receive credit or attribution. All materials carrying an individual copyright notice are the sole property of the author(s). Unless explicitly stated by an officer in conjunction with official WFSC business, opinions expressed by the editor or individual authors are not necessarily endorsed by the WFSC.

Submission deadlines for editorial and advertising materials are for the 1st of the month preceding month of publication (i.e. Jan. 1 for Feb. issue).

All show calendar information, along with all other editorial matter and listings, should be sent to: Wayne L. Youngblood, Editor AFTP, P.O. Box 262, Iola WI 54945-0262. (yngblood@athenet.net) phone: 715-467-4416.

Advertising material and payment should be sent to Dave Carney, Advertising Manager, AFTP, P.O. Box 55, Kimberly, WI 54136-0055. (dcarney@new.rr.com) phone: 920-687-9077. For a complete list of advertising rates and policies (display, classified and listings), request a copy from the advertising manager.



Take a Long-Term View for Your Stamp Collection

By William B. Robinson

Over a period of more than 40 years, I have bought hundreds of stamp, cover and related philatelic collections. I have worked with active collectors who divested some of their material; with retired collectors who sold all their holdings; with spouses, children and other family members who inherited a collection; and with others who inherited or otherwise acquired a collection about which they knew nothing.

My experience tells me the only way a collector can maximize enjoyment and ultimate financial return is to have a plan, implement it and update it regularly.

Here are 10 suggestions that should get you started:

1.) Always preserve your material in a safe, climate-controlled environment. Basements, attics and garages are poor choices – even for bulk and second-rate items.

2.) Tell a trusted person exactly what you have. Identify all albums, boxes, safe deposit boxes and other locations of material. Explain what your collection includes and why it is important, regardless of its estimated cash value. Tell that trusted person what to do in the event of your untimely demise.

3.) Put that same information in writing with your collection and also with other important papers such as a will, or in a place where it can be found easily without you. Include notes within your albums and other parts of your collection identifying especially expensive and scarce items. Don't assume that special items will be automatically recognized. They seldom are.

4.) Don't hide or "squirrel away" expensive stamps in unusual locations (desk or file drawers, between pages of books, behind picture frames) where they will be surely overlooked or

discarded. Unusual locations generally imply no value, not the opposite.

5.) If you have even a tiny interest in disposing of part or all of your collection, do it! You know best what you have, what it is likely worth and who you trust to deal with. You – and you alone – can maximize the return, and (believe it or not) you will enjoy parting with your cherished collection.

6.) If unforeseen circumstances prevent you from selling (or giving away) your philatelic material, make sure the name and contact information of a trusted dealer, collector or other capable person is available to the family member or other trusted person. Re-read Nos. 2 and 3.

7.) Don't assume your stamp collection will be cherished and valued by a distant (or even close) relative. If a spouse, children or grandchildren don't collect stamps, don't expect them to embrace the hobby just because they have your collection. It just won't happen. Your

unwanted stamps will be treated – sooner or later – like your old fishing gear, beer glass collection or woodworking tools. How do you value Aunt Mary's thimble collection?

8.) Unless you truly don't care about the cash value of your stamp collection, plan to put it in the hands of someone who wants it or can sell it properly. Treat it like any asset, irrespective of its low, medium or high value.

9.) The time it will take you to make and implement a plan will be a tiny fraction of a percent of the time you spent enjoying and building your collection. Don't be bashful about talking to someone. Re-read Nos. 2 and 3. Don't make an excuse to postpone your plan.

10.) I guarantee you will enjoy making a plan for the long term. Someone will appreciate your efforts.

Bill Robinson operates the Green Bay Stamp Shop. He prepared this article for a talk at a meeting of the Oshkosh Philatelic Society.

Happy Holidays to all WFSC members!

Wayne L. Youngblood editor, *Across the Fence Post*



WORLDWIDE AND TOPICALS
Peter D. Adamini
 1566 W. Mason St. at Beacon Center
 Green Bay, WI 54303
 Office: 920-499-6886 Home: 920-437-3477
 E-mail: pdadamini@msn.com

We buy and sell...

U.S. Stamps & Foreign Stamps
 Post Cards
 Coin & Stamp Supplies
 Anri
 Antiques

Coins
 Gold
 Diamonds
 Royal Doulton Figurines/
 Character Jugs
 Hummel

Iowa's Largest Stamp Buyer
 Mail Order Service Available

Stamps 'n' Stuff®

8190 Hickman Rd.
 Des Moines, IA 50325-4405

Mon. 10 - 5
 Tues. - Fri. 10 - 6
 Sat. 10 - 4

Phone
 515-331-4307

JERRY & BARBARA KOEPP
 Orders 1-800-999-5964
 Fax 515-331-4957
 Email jbkoepp@msn.com
 http://www.stampsnstuff.com

Lake Edge Stamp Service (L.E.S.S)
 Robert T. Voss
 5333 Kevins Way
 Madison, WI 53714

lestamps@charter.net
 (608) 221-2311

*Lots of Worldwide Stamps
 Bought and Sold*

STAMP SHOWS

Dec. 2-3

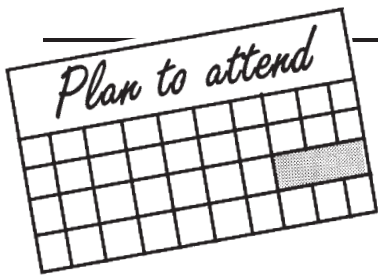
Gonzga Hall * 92nd & Greenfield *
 Milwaukee Exit I-894 & Greenfield or
 I-94 & 84th St. (815)-262-9117
TKURZINSKI2002@YAHOO.COM

President's Corner, from page 1

in an interview. "I could not imagine my life without Grandma Pat's guidance."

Meanwhile, Lewis Hine's life spiraled into an even darker oblivion when the market for the photos he took for the National Child Labor Committee dried up. He died impoverished at the age of 66 in 1940.

But in one illuminating instant 96 years ago, Hine and his placid "anaemic little spinner" teamed to create an iconic image that outlived them both. The glass plate negative rests today in the Library of Congress, and the stamp will continue to reside in millions of stamp collections.



Show Calendar and Registry

List your show, bourse, auction or other event here!

Calendar listings are free for one WFSC member-club event per year. Classified advertising rates apply for all non-members and other events appearing in this section.

2007 WFSC show schedule*

*Some dates and details may be subject to change, and there will likely be additional listings.

Feb. 11, 2007

**Annual Exhibition and Bourse
Janesville Stamp Club**
Holiday Inn Express
3100 Wellington Place, Janesville, WI
Contact: Gary Wentworth
(608-756-1380) wnstamps@aol.com

Feb. 18, 2007

**CENWISPEX '07
Central Wisconsin Stamp Club**
JADECO Stamp and Hobby,
North Point Mall, 200 Division St.,
Stevens Point, Wis.
Contact: J.D. Manville, Box 845,
Stevens Point, WI 54481
(715-341-5555) (jadeco@charter.net)

March 10-11, 2007

**ROCKFORD '07
Rockford Stamp Club**
Forest Hills Lodge
9500 Forest Hills Road, Rockford, IL
Contact: Tim Wait, 1718 Northrock Ct.,
Rockford, IL 61103 (815-670-5869)
t.wait@insightBB.com

March 17, 2007

**BAYPEX '07
Green Bay Philatelic Society**
Ramada Plaza Hotel, 2750 Ramada
Way, Green Bay, WI.
Contact: Gordy Lindner, 1002 Amberly
Trail, Green Bay, WI 54311
(920) 465-6692

March 31, 2007

**OUTAPEX '07
Outagamie Philatelic Society**
Columbus Club, 2531 N. Richmond St.,
Appleton, 10 a.m. to 5 p.m.
Contact: Al Marcus, Box 11, Appleton,
WI 54912 (maram@tds.net)
(920-725-0798)

**Support Philately
& WFSC members
Use stamps
Whenever possible!**

April 21, 2007

**DANEPEX '07
Badger Stamp Club**
Turners Hall, 3001 So. Stoughton Road,
Madison, WI
Contact: John Pare, 510 Meadow View
Rd., #3, Mt. Horeb, WI 53571
(608-437-5124)
pare16@charter.net

May 12, 2007

**Sheboygan Stamp and Coin Show
Sheboygan Stamp Club**
Municipal Building, 375 Buffalo St.,
Sheboygan Falls, WI
Contact: Barbara Stohl, Box 907,
Sheboygan, WI 53082 (920-458-4883)

June 16, 2007

**26th Annual Show and Bourse
Northwoods Stamp and Coin Club**
James Williams Middle School
915, Acacia Lane, Rhinelander, WI
Contact: Larry Marten, 3295 Hancock
Lake Rd., Harshaw, WI 54529
(715-282-5636) lfmarten@yahoo.com or
Bill Julian (715-277-2692)

June 23-24, 2007

**TRI-PEX Stamp Fair
ATA Chapter 5 and North Shore
Philatelic Society**
St. Aloysius Gonzaga Hall
1435 So. 92nd St., West Allis, WI
Contact: Robert Henak, NSPS, Box
170832, Milwaukee, WI (414-351-1519)
henak@excepc.com,
www.MilwaukeePhilatelic.org

It's not always as it looks

by Wayne L. Youngblood

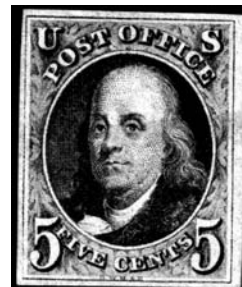
Take a good look at the gorgeous unused four-margin United States No. 1 shown in the accompanying illustration. Its basic catalog value (without gum) is currently \$2,500, but with margins like those the stamp could sell for as much as \$4,000 or more, depending upon what numerical grade it was assigned. But grading and appearance are only part of the total stamp valuing equation.

Take a much closer look. The bottom image (of the same stamp) was taken under longwave ultraviolet light and, if it shows up in this image, you should see a wide – but faint – line that almost appears to

be a burglar mask across Franklin's eyes. It is a brush cancel that has been expertly removed from the stamp to make it appear unused. Of course, not all traces of the cancel could be removed, and under UV light it jumps right out.

Granted, the stamp is still beautiful, but has an actual value somewhere between \$300 - \$900, rather than four times or more that amount. A UV light is just

one of many tools that – with use – can save you many times their cost in buyer protection.



Gibbs Stamps closes



**Gibbs Stamps, Inc.
of LaCrosse, Wis.,
sadly announces the
death of founder and
owner, C. Dorance
Gibbs.**

Due to his passing we are closing our company. We would like to say thank you to our customers and friends. It was his extreme pleasure to work with you through the years. Inquiries may be directed to John Gibbs P.O. Box 264, Superior, WI 54880.

Please patronize our advertisers

The ads for stamp dealers and stamp shows that you see in the pages of this newsletter help make Across the Fence Post and other activities of the Wisconsin

Federation of Stamp Clubs possible.

Please patronize our advertisers and mention that you saw these ads in its pages.